

2023 PROPERTY TAX RATES

AUSTIN & SAN ANTONIO AREAS



Locally Grown ♦ Texas Strong

Independence
Title IndependenceTitle.com



Tax rates released October 2023

Appraisal Districts

Valuing Property

Each county's appraisal district determines the value of all taxable property within the county. Before the appraisals begin, the district compiles a list of taxable property. The listing for each property contains a description and the name and address of the owner.

The appraised home value for a homeowner who qualifies his or her homestead for exemptions in the preceding and current year may not increase more than 10 percent per year.

Property Tax Code Section 23.23(a) sets a limit on the appraised value of a residence homestead, stating that its appraised value for a tax year may not exceed the lesser of: (1) the market value of the property; or (2) the sum of: (A) 10 percent of the appraised value of the property for last year; (B) the appraised value of the property for last year; and (C) the market value of all new improvements to the property, excluding a replacement structure for one that was rendered uninhabitable or unusable by a casualty or by mold or water damage. The appraisal limitation first applies in the year after the homeowner qualifies for the homestead exemption.

How is your property valued?

The appraisal district must repeat its appraisal process for property at least once every three years.

To save time and money, the appraisal district uses mass appraisal to appraise large numbers of properties. In a mass appraisal, the district first collects detailed descriptions of each taxable property in the district. It then classifies properties according to a variety of factors, such as size, use and construction type. Using data from recent property sales, the district appraises the value of typical properties in each class. Taking into account differences such as age or location, the district uses "typical" property values to appraise all the properties in each class.

The appraisal district may use three common methods to value property: the market, income and cost approaches. The market approach is most often used and simply asks, "What are properties similar to this property selling for?"

The value of your home is an estimate of the price your home would sell for on Jan. 1. The appraisal district compares your home to similar homes that have sold recently and determines your home's value.

Other methods are used to appraise types of properties that don't often sell, such as utility companies and oil leases. The income approach asks, "What would an investor pay in anticipation of future income from the property?" The cost approach asks, "How much would it cost to replace the property with one of equal utility?"

Appraisal Districts by County

Each county's appraisal district determines the value of all taxable property within the county. Before the appraisals begin, the district compiles a list of taxable property. The listing for each property contains a description and the name and address of the owner.

Atascosa County
atascosacad.com
(830) 742-3591

Bastrop County
bastropcad.org
(512) 303-1930

Bexar County
bcad.org
(210) 224-8511

Blanco County
blancocad.com
(830) 868-4013

Burnet County
burnet-cad.org
(512) 756-8291

Caldwell County
caldwellcad.org
(512) 398-5550

Comal County
comalad.org
(830) 625-8597

Fayette County
fayettecad.org
(979) 968-8383

Guadalupe County
guadalupead.org
(830) 303-3313

Hays County
hayscad.com
(512) 268-2522

Kendall County
kendallad.org
(830) 249-8012

Lampasas County
lampasacad.org
(512) 556-8058

Llano County
llanocad.net
(325) 247-3065

Medina County
medinacad.org
(830) 741-3035

Travis County
traviscad.org
(512) 834-9317

Williamson County
wcad.org
(512) 930-3787

Atascosa County atascosacad.com**County Jurisdiction**

Atascosa County	0.409730
F.M. Road	0.073158
Total	0.482888

Cities/Villages

City of Charlotte	0.333899
City of Christine	0.455189
City of Jourdanton	0.740000
City of Lytle	0.388300
City of Pleasanton	0.515645
City of Poteet	0.948100

School Districts

ISD - Charlotte	0.992812
ISD - Jourdanton	1.087400
ISD - Karnes	0.796000
ISD - Lytle	1.078200
ISD - Pleasanton	1.905836
ISD - Poteet	1.203957
ISD - Somerset	1.077879

MUDS/WCIDs

MUD #1	0.560000
Atascosa Emergency District	0.100000

Bastrop County bastropcad.org**County Jurisdiction**

Bastrop County	0.321490
Bastrop County Road	0.072040

Cities/Villages

City of Bastrop	0.499400
City of Elgin	0.498237
City of Smithville	0.548952

Emergency Services/Special

Bastrop ESD #1	0.073990
Bastrop County ESD #1D	0.073990
Bastrop ESD #2	0.088000
Bastrop-Travis ESD #1	0.100000

School Districts

ISD - Bastrop	1.070200
ISD - Elgin	1.225700
ISD - Lexington	0.887500
ISD - McDade	0.863600
ISD - Smithville	0.967600
Austin Community College	0.098600

MUDs/WCIDs

Altezza MUD	0.830000
Bastrop County MUD #1	0.615000
Bastrop County MUD #3	0.000000
Bastrop County MUD #4	0.000000
Centex Drainage District	0.400000
Elgin MUD #1	0.950000
Elgin MUD #2	0.950000
The Colony MUD #1A	0.850000
The Colony MUD #1B	0.850000
The Colony MUD #1C	0.850000
The Colony MUD #1D	0.850000
The Colony MUD #1E	0.750000
The Colony MUD #1F	0.850000
The Colony MUD #1G	0.850000
West Bastrop Village MUD	1.000000
WCID #3	0.321800
WCID #3 Defined	0.321800

Bexar County bcad.org**County Jurisdiction**

Bexar County	0.276331
--------------	----------

Cities/Villages

City of San Antonio	0.541590
City of Alamo Heights	0.370980

Bastrop County bastropcad.org

City of Balcones Heights	0.604000
City of Castle Hills	0.543658
City of China Grove	0.206792
City of Converse	0.421389
City of Elmendorf	0.390168
City of Fair Oaks Ranch	0.300500
City of Grey Forest	0.077950
City of Helotes	0.311455
City of Hill Country Village	0.145000
City of Hollywood Park	0.461700
City of Kirby	0.591244
City of Leon Valley	0.484739
City of Live Oak	0.385790
City of Olmos Park	0.478610
City of Sandy Oaks	0.243303
City of Shavano Park	0.307742
City of Somerset	0.756719
City of St. Hedwig	0.495000
City of Terrell Hills	0.359393
City of Universal City	0.517499
City of Von Ormy	0.000000
City of Windcrest	0.388171

Emergency Services/Special

Bexar Co Emg Dist #1	0.100000
Bexar Co Emg Dist #2	0.083941
Bexar Co Emg Dist #3	0.063734
Bexar Co Emg Dist #4	0.049895
Bexar Co Emg Dist #5	0.100000
Bexar Co Emg Dist #6	0.100000
Bexar Co Emg Dist #7	0.099802
Bexar Co Emg Dist #8	0.095201
Bexar Co Emg Dist #9	0.100000
Bexar Co Emg Dist #10	0.100000
Bexar Co Emg Dist #11	0.100000
Bexar Co Emg Dist #12	0.100000
Univ Health	0.276235
Road & Flood Control Fund	0.023668
San Antonio River Authority	0.018000
Alamo Community College	0.149150

School Districts

ISD - Alamo Heights	0.966600
ISD - Boerne	0.993200
ISD - Comal	1.089200
ISD - East Central	0.885200
ISD - Edgewood	1.020092
ISD - Floresville	0.906766
ISD - Harlandale	1.257500
ISD - Judson	1.034600
ISD - Medina Valley	1.169200
ISD - North East	1.010500
ISD - Northside	1.011700
ISD - San Antonio	1.207820
ISD - Schertz-Cibolo	1.139200
ISD - Somerset	1.077879
ISD - South San	1.168200
ISD - Southside	1.104234
ISD - Southwest	1.162100

MUDs/WCIDs

Downtown PID	0.150000
Downtown PID - Condos	0.090000
Cibolo Canyons SID	0.541590
Clearwater Creek SID	0.541590
Crosswinds at South Lake	0.541590
Briggs Ranch SID	0.541590

Butterfield Ranch	0.000000
Gates SID	0.541590
Grace Gardens SID	0.541590
Landon Ridge SID	0.541590
Lemon Creek SID	0.541590
Landon Ridge SID	0.541610
Lemon Creek SID	0.541610
Northlake SID	0.541590
S.A. MUD #1	0.315300
Sapphire Grove SID	0.541590
Stolte Ranch SID	0.541590
Talley Road SID	0.541590
Tres Laurels SID	0.541590
Westpointe SID	0.541590
Westside 211 PID	0.541590

Blanco County blancocad.com**County Jurisdiction**

Blanco County	0.365097
---------------	----------

Cities/Villages

City of Blanco	0.353200
City of Johnson City	0.356900

Emergency Services/Special

N Blanco Co. Emergency Srv Dist	0.100000
S Blanco Co. Emergency Srv Dist	0.100000

School Districts

ISD - Blanco	0.794200
ISD - Johnson City	0.863100

MUDs/WCIDs

Blanco/Pedernales Groundwater	0.017498
-------------------------------	----------

Burnet County burnet-cad.org**County Jurisdiction**

Burnet County	0.3111000
Burnet County Special	0.043000
Total	0.354100

Cities/Villages

City of Bertram	0.455000
City of Burnet	0.613100
City of Cottonwood Shores	0.516200
City of Double Horn	0.068800
City of Granite Shoals	0.508000
City of Highland Haven	0.126000
City of Horseshoe Bay	0.267750
City of Marble Falls	0.540000
City of Meadowlakes	0.137400

Emergency Services/Special

Burnet ESD #1	0.014200
Burnet ESD #2	0.100000
Burnet ESD #3	0.062500
Burnet ESD #4	0.100000
Burnet ESD #5	0.075800
Burnet ESD #6	0.044000
Burnet ESD #7	0.077040
Burnet ESD #8	0.100000
Burnet ESD #9	0.100000

School Districts

CISD - Burnet	0.874200
ISD - Lampasas (Appraisal Only)	1.017500
ISD - Marble Falls	0.887800

MUDs/WCIDs

Highway 71 MUD	1.200000
Kingsland MUD	0.179100
Central TX Water Conserv	0.005500

Caldwell County caldwellcad.org**County Jurisdiction**

Caldwell County	0.469100
Farm to Market	0.000100
Total	0.469200

Cities/Villages

City of Lockhart	0.534800
City of Luling	0.407900
City of Martindale	0.323100
City of Mustang Ridge	0.265200
City of Niederwald	0.074100
City of Uhland	0.093100

Emergency Services/Special

Caldwell-Hays ESD #1	0.100000
Caldwell ESD #2	0.100000
Caldwell ESD #3	0.100000
Caldwell ESD #4	0.100000

School Districts

ISD - Lockhart	0.956900
ISD - Luling	0.870700
ISD - Prairie League	0.947800

MUDs/WCIDs

Bollinger MUD	0.950000
Caldwell MUD 2	0.950000
Gonzales U.G. Water	0.003174
Plum Creek Conserv Dist	0.014500
Plum Creek U.G.	0.014900

Comal County comalad.org**County Jurisdiction**

Comal County	0.226200
County of Comal LTR	0.049515
Total	0.275715

Cities/Villages

City of Bulverde	0.197090
City of Garden Ridge	0.257734
City of New Braunfels	0.408936
City of Spring Branch	0.076443

Emergency Services/Special

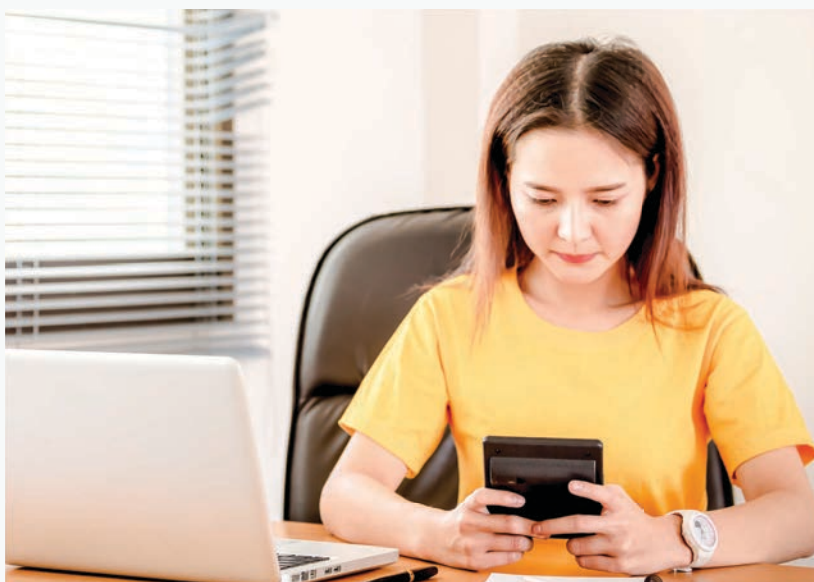
Emergency Service Dist #1	0.069826
Emergency Service Dist #2	0.059167
Emergency Service Dist #3	0.067203
Emergency Service Dist #4	0.059007
Emergency Service Dist #5	0.096770
Emergency Services Dist #6	0.084678
Emergency Services Dist #7	0.051831

School Districts

ISD - Comal	1.089200
ISD - New Braunfels	1.041900

MUDs/WCIDs

Comal Co. Water District #6	0.080586
Comal Co. Water Imp District #1A	0.794000
Comal Co. Water Imp District #1B	0.850000
Comal Co. Water Imp District #1D	0.850000
Comal Co. Water Imp District #1F	0.850000
Johnson Ranch MUD	0.800000
Meyer Ranch MUD	0.950000
York Creek Improvement Dist.	0.004800

**Fayette County** fayettecad.org**County Jurisdiction**

Fayette County	0.276390
F.M. Road & Bridge	0.135570
Total	0.411960

Cities/Villages

City of Carmine	0.002010
City of Fayetteville	0.082540
City of Flatonia	0.287330
City of La Grange	0.186680
City of Schulenburg	0.193420
Town of Round Top	0.029990

School Districts

ISD - Fayetteville	0.874100
ISD - Flatonia	0.895110
ISD - Giddings	0.908020
ISD - La Grange	0.815300
ISD - Round Top/Carmine	0.754100
ISD - Schulenburg	0.848720
ISD - Smithville	0.967600

MUDs/WCIDs

Cummins Creek WCID	0.018820
Monument Hill WCID	0.210000
Fayette County GWCD	0.008200

Guadalupe County guadalupead.org**County Jurisdiction**

Guadalupe County	0.273100
Lateral Road	0.050000
Total	0.323100

Cities/Villages

City of Cibolo	0.4699
City of Marion	0.4715
City of Santa Clara	0.1514
City of Schertz	0.4872
City of Seguin	0.5125
City of Selma	0.1879

School Districts

ISD - Marion	1.136200
--------------	----------

ISD - Navarro	1.140100
ISD - Schertz/Cibolo/Univ. City	1.139200
ISD - Seguin	1.116600

MUDs/WCIDs

York Creek Water District	0.004800
Lone Oak MUD	0.720000
Lake Dunlap WCID	0.200000
Lake Placid WCID	0.781000
Lake McQueeney	0.271000

Hays County hayscad.com**County Jurisdiction**

Hays County	0.287500
-------------	----------

Cities/Villages

City of Buda	0.337900
City of Dripping Springs	0.171800
City of Hays	0.089600
City of Kyle	0.508200
City of Mountain City	0.084400
City of Niederwald	0.074100
City of San Marcos	0.603000
City of Uhland	0.093100
City of Woodcreek	0.200000
Village of Bear Creek	0.064300

Emergency Services/Special

Caldwell Hays ESD #1	0.1000
Hays Co. ESD #5	0.0843
Hays Co. ESD #6	0.06492
Hays Co. ESD #8	0.0826
Hays Co. ESD #9	0.04913
North Hays Co. ESD #1	0.03010
Northeast Hays Co. ESD #2	0.0650
South Hays ESD #3	0.1000
Special Road (Over 65 Only)	0.0200
Wimberley Fire Hays Co ESD #4	0.0580
Wimberley Hays Co ES Dist #7	0.0577

School Districts

Austin Community College	0.098600
CISD - Hays	1.156900
CISD - San Marcos	0.991500
ISD - Dripping Springs	1.107500
ISD - Wimberley	0.979900

* Continued on next page

MUDs/WCIDs	
Anthem MUD	1.000000
Buda MUD #1	0.600000
Crosswinds MUD	0.900000
Driftwood Economic Dev MMD	0.150000
Dripping Springs MUD 1	0.760000
Greenhawe WCID #2	0.159200
Hays Co. MUD #4	0.850000
Hays Co. MUD #5	0.402500
Hays Co. WCID No. 1	0.710000
Hays Co. WCID No. 2	0.730000
Hays County Dev Dist No. 1	0.900000
Headwaters MUD	0.900000
North Hays Co. MUD #1	0.500000
North Hays Co. MUD #2	0.200000
Plum Creek Conservation	0.014500
Plum Creek Groundwater	0.014900
Reunion Ranch WCID	0.624000
South Buda WCID #1	0.662500
Springhollow MUD	1.000000
Sunfield MUD #1	0.900000
Sunfield MUD #3	0.900000
Sunfield MUD #4	0.900000
Wild Ridge MUD	0.872200
York Creek Improvement	0.004800

Kendall County kendallad.org

County Jurisdiction	
Kendall County	0.382700
Cities/Villages	
City of Boerne	0.476600
School Districts	
ISD - Boerne	0.993200
ISD - Comfort	0.962600
MUDs/WCIDs	
Cow Creek Groundwater	0.005000
Kendall Co. WCID #1	0.155773
Kendall Co. MUD #1	0.650000
Miralomas MUD	1.000000

Lampasas County lampasacad.org

County Jurisdiction	
Lampasas County	0.398600
Road & Bridge	0.120900
Total	0.519500
Cities/Villages	
City of Copperas Cove	0.672652
Town of Evant	0.669200
City of Goldthwaite	0.913300
City of Lampasas	0.304888
City of Lometa	0.294300
City of Kempner	0.280000
City of San Saba	0.702100
School Districts	
ISD - Lampasas	1.017500
ISD - Lometa	1.821100

Llano County llanocad.net

County Jurisdiction	
Llano County	0.239210
Road & Bridge	0.010000
Total	0.249210
Cities/Villages	
City of Horseshoe Bay	0.267750
City of Llano	0.528000
City of Sunrise Beach	0.157850
School Districts	
CISD - Burnet	0.874200
ISD - Johnson City	0.863100
ISD - Llano	0.786600
ISD - Marble Falls	0.887800
Emergency Services/Special	
Llano ESD #1	0.015887
Llano ESD #2	0.02442
Llano ESD #3	0.04662
Llano ESD #4	0.10000

MUDs/WCIDs	
Deerhaven WCID	0.17730
Kingsland MUD	0.17910
Llano County MUD #1	0.293105
Llano County Road District #1	0.01000

Medina County medinacad.org

County Jurisdiction	
GME	0.352600
RFM	0.083000
MWD	0.006950
Total	0.442550
Cities/Villages	
City of Castroville	0.523300
City of Devine	0.555300
City of Hondo	0.437000
City of LaCoste	0.580000
City of Lytle	0.388300
City of Natalia	0.573700
School Districts	
ISD - Devine	0.967000
ISD - D'Hanis	0.975400
ISD - Hondo	0.938400
ISD - Lytle	1.078200
ISD - Medina Valley	1.169200
ISD - Natalia	1.157000
ISD - Northside	1.011700
ISD - Utopia	0.884600

Emergency Services/Special	
Medina County ESD #1	0.090000
Medina County ESD #2	0.070400
Medina County ESD #3	0.040200
Medina County ESD #4	0.050000
Medina County ESD #5	0.100000
Medina County ESD #6	0.100000
Utopia/Vanderpool Area ESD #1	0.075545
Medina Co. Pct. #2 Special Rd	0.040000
Potranco Acres PID	0.500000
Potranco Oaks PID #1	0.450000
Potranco Ranch PID	0.180000
Potranco Ranch PID #2	0.180000
Potranco West PID	0.450000
Redbird Ranch Water Dist	1.000000
Medina County Hospital District	0.089800
The Enclave Potranco PID	0.450000

Travis County traviscad.org

County Jurisdiction	
Travis County	0.304655
Cities/Villages	
City of Austin	0.445800
City of Bee Cave	0.020000

* Continued on next page



City of Cedar Park	0.370000
City of Creedmoor	0.450000
City of Elgin	0.498237
City of Jonestown	0.390500
City of Lago Vista	0.413900
City of Lakeway	0.144000
City of Leander	0.417282
City of Manor	0.678900
City of Mustang Ridge	0.265200
City of Pflugerville	0.536200
City of Rollingwood	0.191700
City of Round Rock	0.342000
City of West Lake Hills	0.178600
Village of Briarcliff	0.068000
Village of Point Venture	0.085828
Village of San Leanna	0.249800
Village of The Hills	0.100000
Village of Volente	0.072300
Village of Webberville	0.170000

Emergency Services/Special

Bastrop-Travis Counties ESD #1	0.100000
Travis County ESD #01	0.100000
Travis County ESD #02	0.077300
Travis County ESD #03	0.040000
Travis County ESD #04	0.040000
Travis County ESD #05	0.100000
Travis County ESD #06	0.083100
Travis County ESD #07	0.084200
Travis County ESD #08	0.081000
Travis County ESD #09	0.073500
Travis County ESD #10	0.100000
Travis County ESD #11	0.100000
Travis County ESD #12	0.098200
Travis County ESD #13	0.100000
Travis County ESD #14	0.100000
Travis County ESD #15	0.100000
Travis County ESD #16	0.073000
Travis County ESD #17	0.023000

School Districts

Austin Community College Dist	0.098600
CISD - Hays	1.156900
ISD - Austin	0.859500
ISD - Coupland	1.169200
ISD - Del Valle	1.002800
ISD - Dripping Springs	1.107500
ISD - Eanes	0.888000
ISD - Elgin	1.225700
ISD - Johnson City	0.863100
ISD - Lago Vista	1.019200
ISD - Lake Travis	1.074100
ISD - Leander	1.108700
ISD - Manor	1.086100
ISD - Marble Falls	0.887800
ISD - Pflugerville	1.109200
ISD - Round Rock	1.919000

MUDs/WCIDs

Altezza MUD	0.830000
Anderson Mill Limited Dist	0.122544
Belvedere MUD	0.205000
Briarwood MUD	0.560000
Cottonwood Creek MUD #1	0.773500
Cypress Ranch WCID #1	0.867500
Hurst Creek MUD	0.239200
Kelly Lane WCID #1	0.457500
Kelly Lane WCID #2	0.511000
Lake Pointe MUD #3	0.140200
Lake Pointe MUD #5	0.140200
Lakeside MUD #3	0.690000

Lakeside MUD #5	0.970000
Lakeside WCID #1	0.540000
Lakeside WCID #2A	0.967500
Lakeside WCID #2B	0.782500
Lakeside WCID #2C	0.812500
Lakeside WCID #2D	0.765000
Lakeway MUD	0.053100
Lazy Nine MUD #1A	1.000000
Lazy Nine MUD #1B	0.895000
Lost Creek Limited District	0.035400
Moore's Crossing MUD	0.711000
NE Travis County Utility District	0.438500
North Austin MUD #1	0.224600
Northtown MUD	0.552500
Onion Creek Metro Park District	0.350000
Pilot Knob MUD #2	0.825800
Pilot Knob MUD #3	0.875200
Pilot Knob MUD #4	0.950000
Pilot Knob MUD #5	0.950000
Presidential Glen MUD	0.275300
Ranch at Cypress Creek MUD #1	0.295500
River Place Limited District	0.067000
Senna Hills MUD	0.316300
Shady Hollow MUD	0.088200
Southeast Travis County MUD #1	0.935000
Southeast Travis County MUD #2	0.980000
Sunfield MUD #1	0.900000
Sunfield MUD #3	0.900000
Tanglewood Forest Limited Dist	0.162800
Travis Central Health	0.100692
Travis Co. Bee Cave Rd Dist #1	0.228532
Travis County MUD #02	0.792500
Travis County MUD #03	0.392000
Travis County MUD #04	0.720000
Travis County MUD #05	0.458600
Travis County MUD #06	0.423000
Travis County MUD #07	0.908900
Travis County MUD #08	0.485500
Travis County MUD #09	0.782500
Travis County MUD #11	0.323300
Travis County MUD #12	0.504000
Travis County MUD #13	0.356900
Travis County MUD #14	0.720000
Travis County MUD #15	0.314000
Travis County MUD #16	0.740460
Travis County MUD #17	0.778000
Travis County MUD #18	0.750000
Travis County MUD #19	0.395000
Travis County MUD #20	0.395000
Travis County MUD #21	0.365000
Travis County MUD #22	0.850000
Travis County MUD #23	0.258000
Travis County MUD #24	0.950000
Travis County MUD #26	0.900000
WCID #10	0.063400
WCID #17	0.053300
WCID #17 (Flintrock Ranch Estates)	0.258000
WCID #17 (Serene Hills)	0.551300
WCID #17 (Steiner Ranch)	0.178100
WCID #18	0.061100
WCID #19	0.190100
WCID #20	0.134100
WCID Point Venture	0.672200
Wells Branch MUD	0.257000
West Travis County MUD #6	0.222100
West Travis County MUD #8	0.475000
Wilbarger Creek MUD #1	0.722000
Wilbarger Creek MUD #2	0.950000
Williamson Co WSID Dist #3	0.621000
Williamson & Travis Co. MUD #1	0.288100

Williamson County wcad.org

County Jurisdiction

Williamson County	0.333116
F.M. & Road	0.044329
Total	0.377445

Cities/Villages

City of Austin	0.445800
City of Cedar Park	0.370000
City of Coupland	0.201431
City of Florence	0.603330
City of Georgetown	0.374000
City of Granger	0.840000
City of Hutto	0.422114
City of Jarrell	0.414004
City of Leander	0.417282
City of Liberty Hill	0.454559
City of Pflugerville	0.536200
City of Round Rock	0.342000
City of Taylor	0.628774
City of Thrall	0.403332
City of Weir	0.150717

Emergency Services/Special

Williamson County ESD #1	0.100000
Williamson County ESD #2	0.094296
Williamson County ESD #3	0.100000
Williamson County ESD #4	0.067969
Williamson County ESD #5	0.100000
Williamson County ESD #6	0.061900
Williamson County ESD #7	0.080166
Williamson County ESD #8	0.094073
Williamson County ESD #9	0.094366
Williamson County ESD #10	0.100000
Williamson County ESD #11	0.090900
Williamson County ESD #12	0.090698

School Districts

Austin Community College	0.098600
EWC Higher Ed Center	0.038320
ISD - Coupland	1.169200
ISD - Florence	1.106500
ISD - Georgetown	1.046700
ISD - Granger	1.154700
ISD - Hutto	1.207500
ISD - Jarrell	1.169200
ISD - Leander	1.108700
ISD - Liberty Hill	1.169200
ISD - Pflugerville	1.109200
ISD - Round Rock	0.919000
ISD - Taylor	1.100000
ISD - Thrall	1.207700

MUDs/WCIDs

Anderson Mill Limited District	0.122544
Avery Ranch Road District	0.032000
Berry Creek Highland	0.550000
Block House MUD	0.590500
Brushy Creek MUD	0.419543
Brushy Creek MUD Defined Area	0.115000
Cool Water	0.950000
CLL MUD #1	0.822000
Donahoe Creek	0.022700
Fern Bluff MUD	0.200000
Georgetown Village PID	0.120000
Highlands At Mayfield Ranch	0.518100
Lakeside MUD #2A	0.967500
Lakeside MUD #3	0.690000
Leander MUD #1	1.000000
Leander MUD #2	1.000000
Leander MUD #3	1.000000
Leander TODD MUD #1	0.350000
Lower Brushy Creek WCID	0.016265

Meadows of Chandler Creek MUD	0.297200	Somerset Hills Rd District #4	0.290000	Williamson County #19	0.642500
North Austin MUD# 1	0.224600	SE Williamson County MUD #1	0.459500	Williamson County #19A	0.694600
North San Gabriel #1	0.950000	Stonewall Ranch	0.763000	Williamson County #19B	0.850000
North San Gabriel #2	0.400000	Upper Brushy Creek WCID	0.017000	Williamson County #19C	0.850000
NW Williamson County #2	0.950000	Vista Oaks	0.235000	Williamson County #19E	0.850000
Northwoods Road District	0.197500	Walsh Ranch	0.415900	Williamson County #19F	0.850000
Palmera Ridge	0.400000	Watch Hill	0.557200	Williamson County #19G	0.850000
Paloma Lakes #1	0.420000	Weir	0.150717	Williamson County #19H	0.850000
Paloma Lakes #2	0.507500	Wells Branch	0.257000	Williamson County #22	0.865000
Parkside at Mayfield Ranch	0.407500	West Williamson County #1	0.720500	Williamson County #23	0.930000
Parkside on the River #1	0.920000	West Williamson County #2	0.682000	Williamson County #25	0.920000
Pearson Place Rd District	0.061000	Williamson/Liberty Hill	0.950000	Williamson County #26	0.900000
Ranch at Cypress Creek #1	0.295500	Williamson/Travis #1	0.288100	Williamson County #28	0.625000
Round Rock #1	0.680000	Williamson County WSID #3	0.621000	Williamson County #29	0.650000
Round Rock #2	0.511000	Williamson County #10	0.411500	Williamson County #30	0.735500
Siena #1	0.583900	Williamson County #11	0.396000	Williamson County #31	0.850000
Siena #2	0.630000	Williamson County #12	0.735500	Williamson County #32	0.850000
Sonterra	0.703500	Williamson County #13	0.547100	Williamson County #34	0.632500
Somerset Hills Rd District #3	0.290000	Williamson County #15	0.520000	Williamson County #35	0.950000

Homestead Exemptions

What is a Homestead Exemption?

Homestead exemptions are granted by the county appraisal district where the property is located. The exemption reduces a homeowner's property tax bill by removing part of the home's value from taxation. All Texas homeowners are able to apply for a General Residence Homestead Exemption for their primary residence. Other exemptions are available to homeowners who are over 65, Veterans or disabled, and require the same application process.

Who qualifies?

These requirements must be met to receive the exemption:

1. You may now apply as soon as you close on your home, which is new for 2022 and the result of legislative action for the State of Texas. Prior to 2022, a homeowner had to wait until the following year to apply.
2. The property must qualify as a residence on January 1st of the year for which you are applying. Over 65, veteran's and disability exemptions have additional requirements. To be a qualifying residence, the home must be complete and habitable on January 1st. A new home under construction would not meet this standard and would not qualify until the following year.
3. You may only claim one property in Texas at a time as homestead.
4. Only individual homeowners (not corporations or other entities) may receive a homestead exemption. Family Trusts may qualify, check with the local appraisal district for requirements.
5. A homestead can be a house, condominium, or a manufactured home. It can include up to 20 acres, if the land is also owned by the homeowner and used as a yard, or for another purpose related to the residential use of the home.

How do homeowners apply?

1. Complete the APPLICATION FOR RESIDENTIAL HOMESTEAD EXEMPTION (available on the websites of most county appraisal districts, or at the Texas Comptroller's website at comptroller.texas.gov/taxinfo/taxforms/50-114.pdf)
2. Include a copy of your DRIVER'S LICENSE or IDENTIFICATION CARD from the Texas Department of Public Safety at www.txdps.state.tx.us. The address MUST MATCH the homestead address.

For more information, contact your local county appraisal district office, or visit

comptroller.texas.gov/taxinfo/proptax/exemptions.html

Your Doorway to a Smooth Closing



Locally Grown ♦ Texas Strong



Independence

Title

IndependenceTitle.com