

# WIMBERLEY

## TEXAS



Independence Title



[IndependenceTitle.com](https://IndependenceTitle.com)





Wimberley is the geographic center and the aesthetic heart of the Wimberley Valley and is located at the confluence of Cypress Creek and the Blanco River. It was officially incorporated in May 2000. Before that it was a officially a census designated place. Wimberley is 28 miles southwest of Austin and 46 miles northeast of San Antonio.

Wimberley's fame is for its many rivers and streams. Cypress Creek flows from Jacob's Well into Wimberley and then south to the Blanco River, which flows through the Wimberley Valley from west to east. Wimberley has been a retreat for artists, musicians and writers for many years. Art galleries, quaint shops and performing arts venues showcase the local talent year round. Wimberley hosts the most popular Market Day in the area. From March through December, on the first Saturday of the month, Market Day beckons treasure hunters from all over the country. Visitors can choose from a wide variety of bed and breakfast inns, motels, resorts or RV parks. The climate and setting make Wimberley a desirable place to live and a favorite vacation getaway. Come see why Wimberley is known as "a little bit of heaven".

## Local Services

### Wimberley City Hall

221 Stillwater 512-847-0025  
cityofwimberley.com

### Hays County Sheriff's Office

1307 Uhland Road, San Marcos  
co.hays.tx.us 512-393-7800

### City of Woodcreek

41 Champion Circle 512-847-7641  
cityofwoodcreek.com

### U.S. Post Office

11 Joe Wimberley Blvd.  
usps.com 512-847-2623

### Hays Co Government Center Annex

200 Stillwater, Wimberley  
co.hays.tx.us

### Hays County Commissioner, Pct. 3

Lon Shell 512-847-3159  
lon.shell@co.hays.tx.us

### Justice of the Peace, Pct. 3

Andrew W. Cable 512-847-2000  
jp3@co.hays.tx.us

### Hays County Constable-Precinct 3

Ray Helm 512-847-5532  
ray.helm@co.hays.tx.us

## Public Safety

### Hays County Health Dept

512-393-2150

### Hays County Sheriff Dept

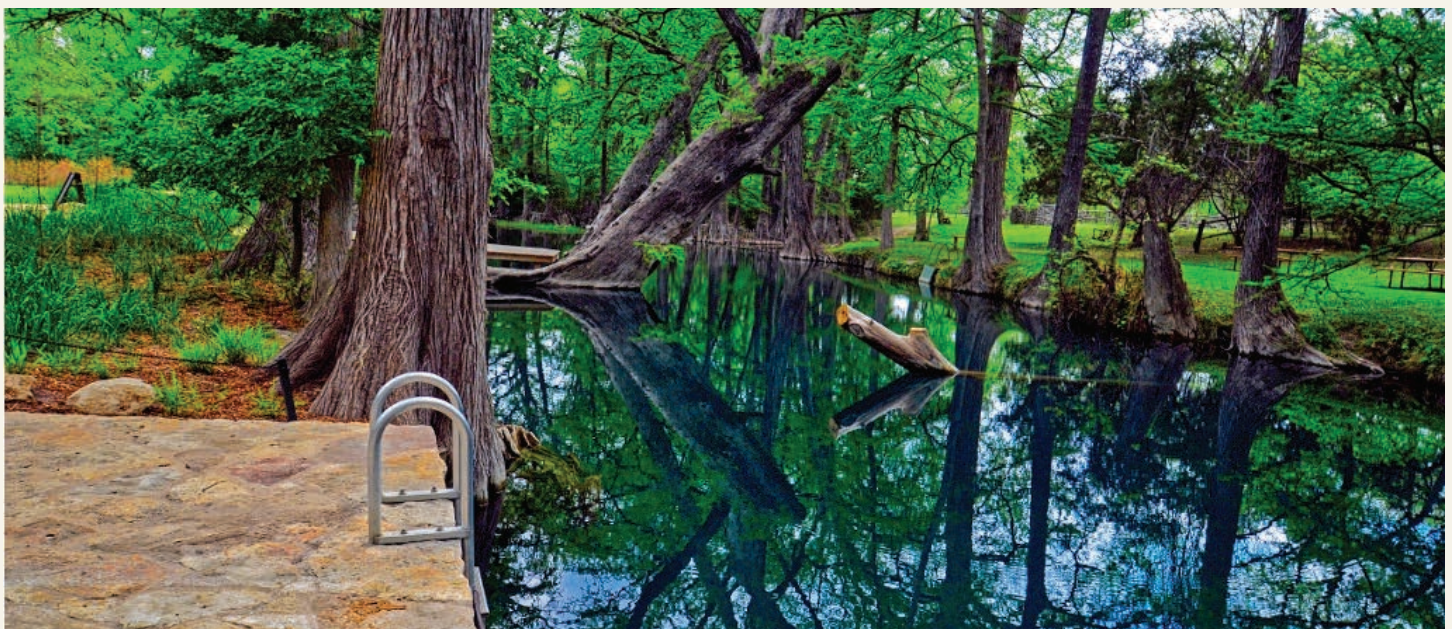
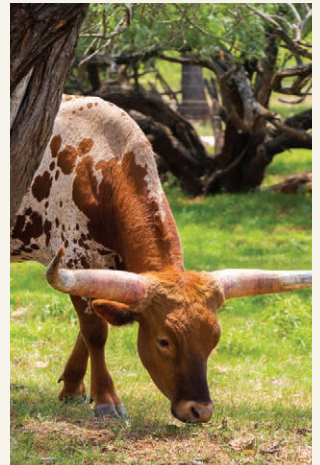
Dispatch: 512-393-7896  
Emergency: Call 911

### Wimberley Volunteer Fire Dept.

111 Green Acres Dr., Wimberley  
Station: 512-847-3536  
Emergency: Call 911  
wimberleyfire.com

### Animal Referral Services

512-847-2878  
visitwimberley.com/arf





## Utilities

### Aquasource

370 Valley Spring Road  
512-847-2972

### Pedernales Electric

1810 FM 150, Kyle  
512-262-2161  
pec.coop.com

### Hill Country Hydro Gas

319 FM 2325, Wimberley  
512-847-9825 | 888-868-9825 (toll free)  
hillcountryhydrogas.com

### Wimberley Water Supply

110 La Pais Drive  
512-847-2323

### AT&T

U-verse | Direct TV | Phone  
800-288-2020  
att.com

### Spectrum Cable

833-694-9259  
spectrum.com

## Area Attractions

### Bella Vista Ranch

Olive Oils & Wine Cellars  
3101 Mt. Sharp Road  
512/847-6514  
texasoliveoil.com

### Blue Hole Regional Park

The park includes approximately 3.5 miles of trails, picnic areas, a community pavilion, playscape, basketball court, sand volleyball court, amphitheater, and the Blue Hole Swimming Area. Reservations are required to swim.  
100 Blue Hole Lane  
512/660-9111  
cityofwimberley.com

### The Corral Theatre

Seasonal outdoor venue for parties & movies under the stars.  
100 Flite Acres Road  
512/847-5994  
corraltheatre.com

### EmilyAnn Theatre & Gardens

Year-round, family-friendly entertainment. See a show under the stars on our outdoor main stage or take a seat in our intimate indoor studio theatre. Venue also has a garden area, life-sized chess board and picnic spaces.  
1101 FM 2325  
512/847-6969  
emilyann.org

### Jacob's Well

This natural karstic spring is "fed by the Trinity Aquifer, which pushes up its water through the well and spills it into nearby Cypress Creek." It also happens to be the entrance of Texas's second longest fully-submerged cave, with plunging depths of 100 feet or more. Reservations are required to swim.  
1699 Mt. Sharp Road  
512-847-2140  
co.hays.tx.us

### 7A Ranch & Pioneer Town

A family vacation resort with seven acres of ranch land along the Blanco River. In Pioneer Town, located at 7A, you can spend the day and weave your way through the Opera House, Cowboy Museum, Game Room, Bottle House, Print Shop, Ice Cream Parlor, Log Cabins and Storefronts.  
333 Wayside Drive  
512-847-2517  
7AResort.com

### Quicksand at Woodcreek Golf

1 Pro Lane, Wimberley  
512-847-9700  
golfquicksand.com

### Wimberley Glassworks

Hand blown art glass  
6469 Ranch Road 12  
512-393-3316  
wgw.com

### Wimberley Lion's Market Days

The oldest outdoor market in the Texas Hill Country and the second-largest in the state. With over 475 booths of everything you can't live without.  
601 FM 2325  
1st Saturday, March-December  
shopmarketdays.com

### Wimberley Players

Performing arts theater  
450 Old Kyle Road  
512-847-1592  
wimberleyplayers.org

### Wimberley Valley Art League & Gallery

Art Classes, Exhibits & Events  
14068 Ranch Road 12  
512-826-4286  
visitwimberley.com

### Wimberley Zipline Adventures

Guided nature walks with several zip line crossings with panoramic views.  
376 Winn Valley Dr  
512-847-9990  
wimberleyzipline.com



## Wimberley ISD

wimberleyisd.net

Total Students	2,293
Total Staff (Teachers/Admin)	313.0
Students per Teacher	14.4
Attendance Rate	96.2%
Dropout Rate (Grades 9-12)	0.3%
% Tested - SAT/ACT	68.1%
Average SAT Score	1602
Average ACT Score	23.5
STAAR Test Participation (All Grades)	100%
STAAR All Subjects (All Grades)	84.0%
4-Year Graduation Rate without Exclusions	96.5%

### Wimberley ISD Central Office

Superintendent: Dwain York  
951 FM 2325, Wimberley  
wimberleyisd.net 512-847-2414

### Jacob's Well Elementary

Grades 2-5  
Principal: Andrea Pope  
3470 Ranch Road 2325, Wimberley  
jw.wimberleyisd.net 512-847-5558

### Scudder Primary School

Grades: Pk-2, Rk-1  
Principal: Dara Richardson  
400 Green Acres Drive, Wimberley  
sc.wimberleyisd.net 512-847-3407

### Danforth Jr. High School

Principal: Greg Howard  
200 Texan Blvd, Wimberley  
jh.wimberleyisd.net 512-847-2181

### Wimberley High School

Grades: 9-12  
Principal: Jason Valentine  
100 Carney Lane, Wimberley  
hs.wimberleyisd.net 512-847-5729



## Annual Events

### February

#### Mardi Gras and Gumbo Cookoff Pioneer Town

Music, food, drinks, parade, King & Queen, costume contest, gumbo cook-off, lots of fun. 21 and older. This fundraiser is sponsored by MyNK, 501(c)(3) whose sole purpose is to provide immediate short-term financial assistance for disaster victims in the Wimberley area.  
[mynkwimberley.org](http://mynkwimberley.org)

### April

#### Butterfly Festival

A day of fun for the whole family! Admission is free; donations are appreciated. Live Butterfly Release Every 30 Minutes, Raffle, Butterfly Store, Earth Day Celebration, Butterfly Art, Entertainment, Concessions, & games.  
[emilyann.org/butterfly](http://emilyann.org/butterfly)

#### Wimberley Art Festival

The Wimberley Valley Art League hosts its annual Arts Fest to celebrate the visual arts of local and regional artists.  
[wimberleyartsfest.com](http://wimberleyartsfest.com)

#### Wimberley Pie Social

Great family fun with entertainment, kids' activities including a bounce house, face painting, petting zoo, hot dogs, drinks, snow cones and yes, pie by the slice!  
[wimwic.org/pie-social](http://wimwic.org/pie-social)

### July

#### Annual Community 4th of July Parade & Jubilee

Under the shade trees at Ozona Bank. Live music, family fun, entertainment and great food! Don't miss the family fun, food and entertainment.  
Information: 512/847-2201

### November

#### Annual Wimberley Community Civic Club Home Tour

Hosted by Wimberley Community Civic Club. Showcasing five beautiful homes in the Wimberley Valley offering a range of styles, sizes and architecture. All homes are decorated for Thanksgiving or Christmas. A gift shop at the Winters Wimberley House will offer unique Christmas gifts. Guests may also enjoy a complimentary wine tasting hosted by Taste Buds.  
[wimberleyccc.com](http://wimberleyccc.com)



### December

#### Annual Lighted Christmas Parade

The parade will meander through town on RR12 toward the Wimberley Square and turn left onto Old Kyle Road. Roads will close at 9am so get your place early. Help make this a special Christmas for everyone by participating. All individuals, merchants and organizations are encouraged to participate.  
[wimberley.org](http://wimberley.org)

#### Trail of Lights Festival at EmilyAnn Theatre & Gardens

Designed to delight and inspire your holiday season. After strolling through our quaint shops and art galleries, have dinner at one of our restaurants and then end your evening at EmilyAnn Theatre and Gardens' Trail of Lights. A magical place where the beauty of nature and Christmas meet. Meet your friends at the Yule Log and enjoy roasting marshmallows and singing carols.  
[emilyann.org](http://emilyann.org)

### Monthly Events

#### Market Days

1st Saturday of the month March-December Wimberley hosts the oldest outdoor market in the Texas Hill Country and the second-largest in the state. We feature over 475 booths of everything you can't live without. Come stroll our tree-shaded paths, listen to live music and shop to your heart's content.  
[shopmarketdays.com](http://shopmarketdays.com)

#### Gallery Trail Wimberley

At the Square and around town. The 2nd Sat of every month from 4-7p., Wimberley's fine art galleries keep their doors open late for the monthly Gallery Trail. Wimberley's fifteen participating galleries feature a wide spectrum of fine art from local and national artists. Come to Wimberley and enjoy wine, nibbles, and ... art! Free.  
[gallerytrail.com](http://gallerytrail.com)

# Make us your personal title company!

Locally Grown ♦ Nationally Strong

