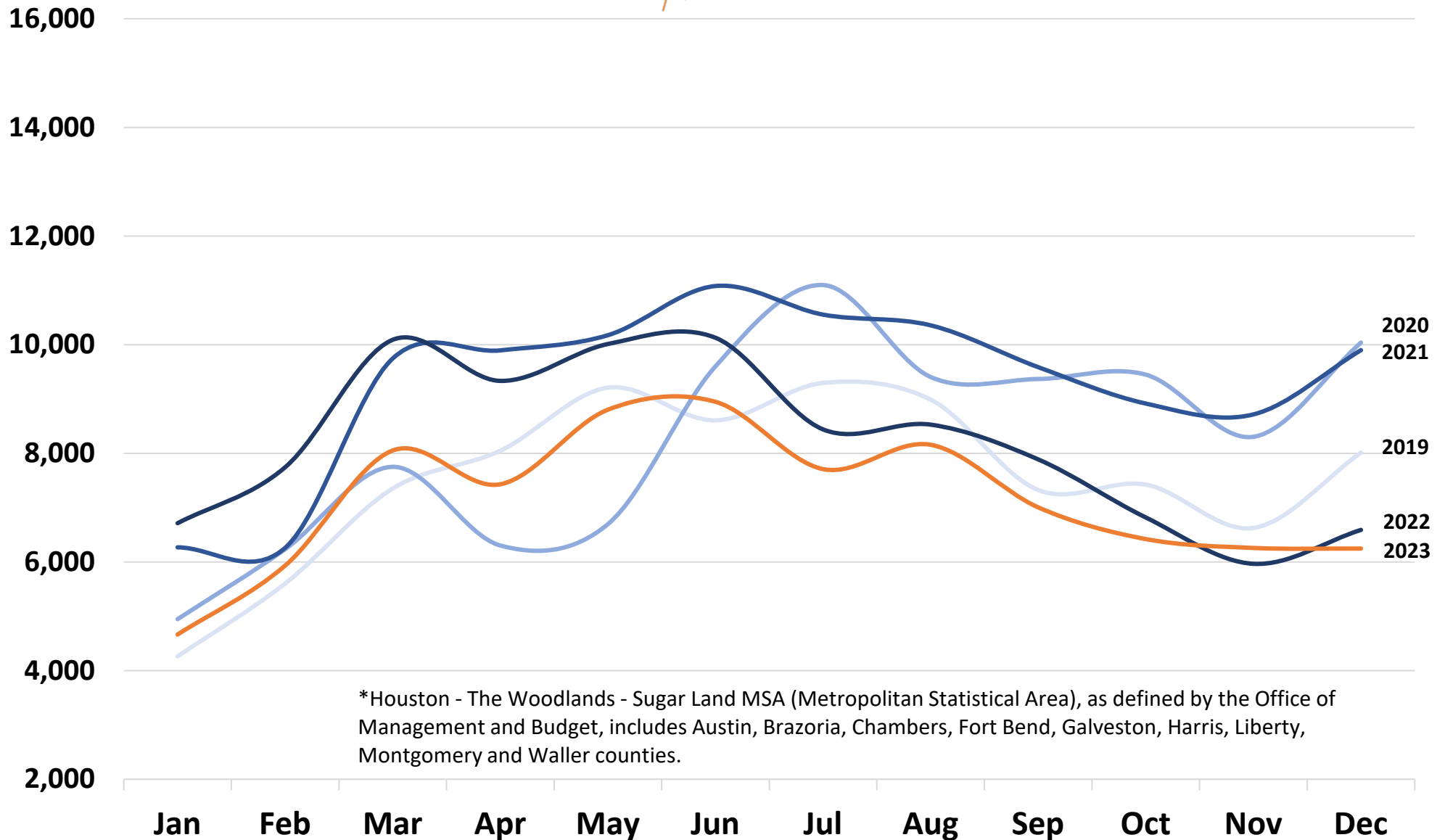


# Houston MSA Residential Sales - 2019-2023

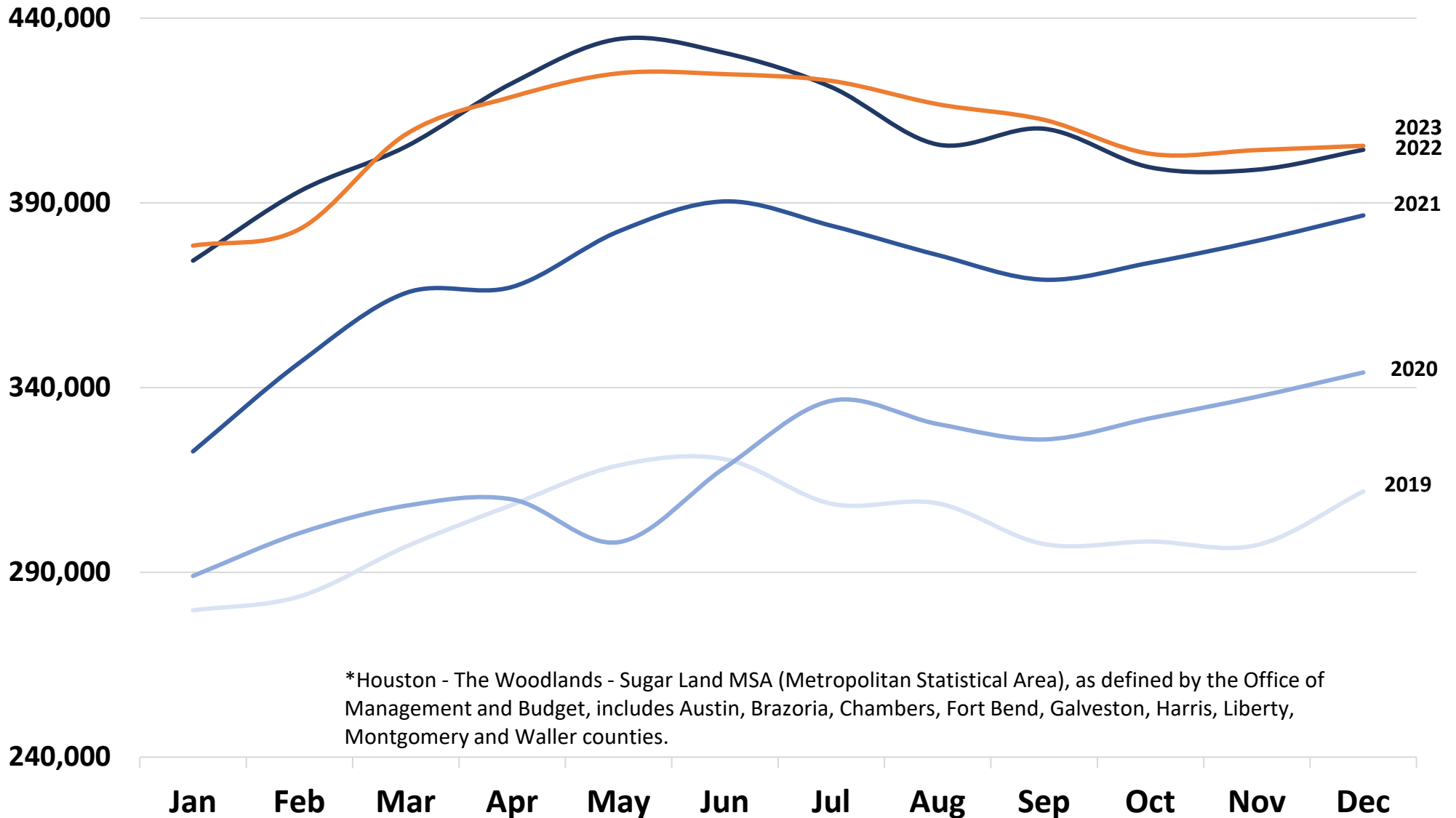
— 2019 — 2020 — 2021 — 2022 — 2023



\*Houston - The Woodlands - Sugar Land MSA (Metropolitan Statistical Area), as defined by the Office of Management and Budget, includes Austin, Brazoria, Chambers, Fort Bend, Galveston, Harris, Liberty, Montgomery and Waller counties.

# Houston MSA Average Sales Price - 2019-2023

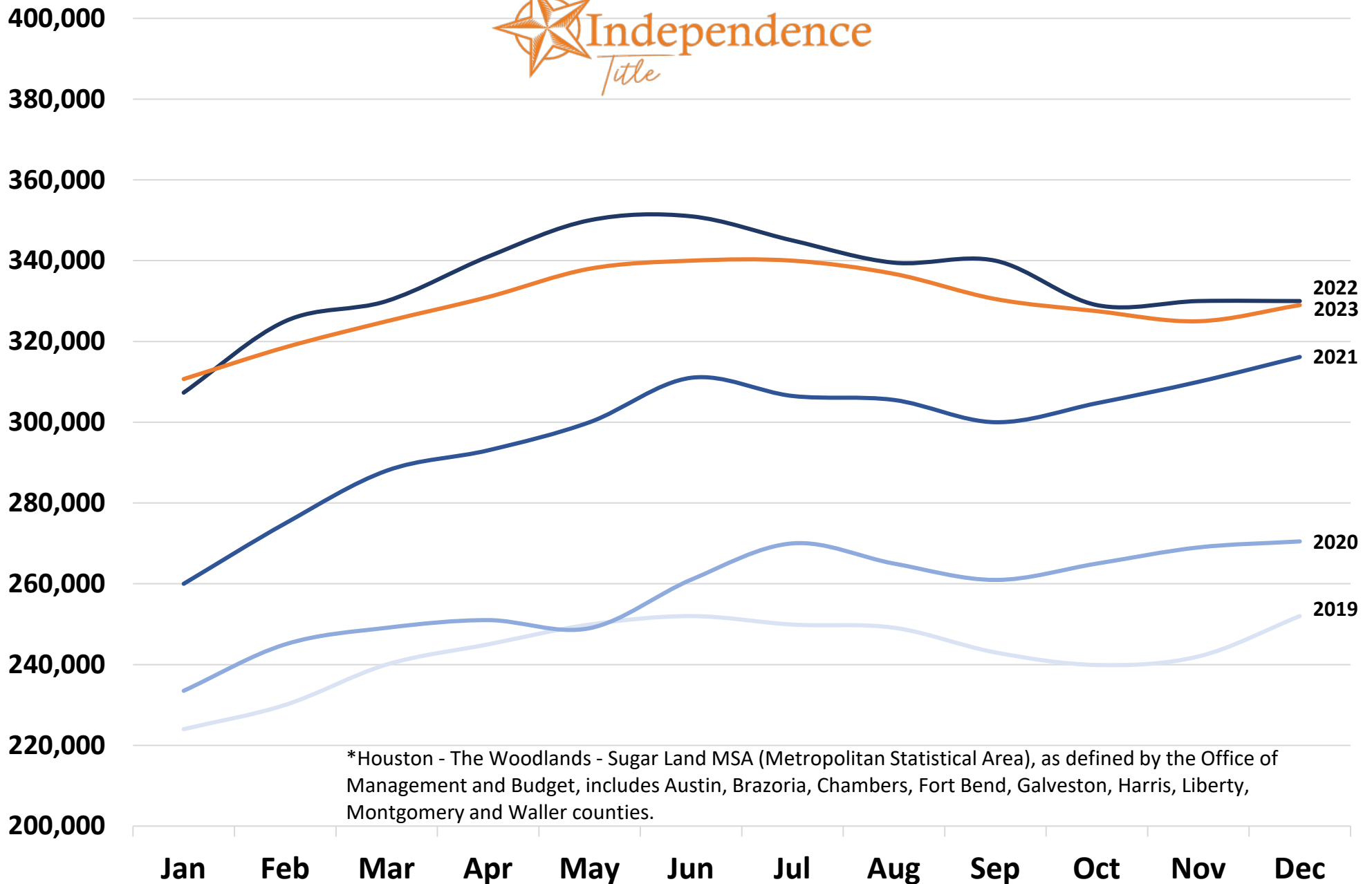
— 2019 — 2020 — 2021 — 2022 — 2023



\*Houston - The Woodlands - Sugar Land MSA (Metropolitan Statistical Area), as defined by the Office of Management and Budget, includes Austin, Brazoria, Chambers, Fort Bend, Galveston, Harris, Liberty, Montgomery and Waller counties.

# Houston MSA Median Sales Price - 2019-2023

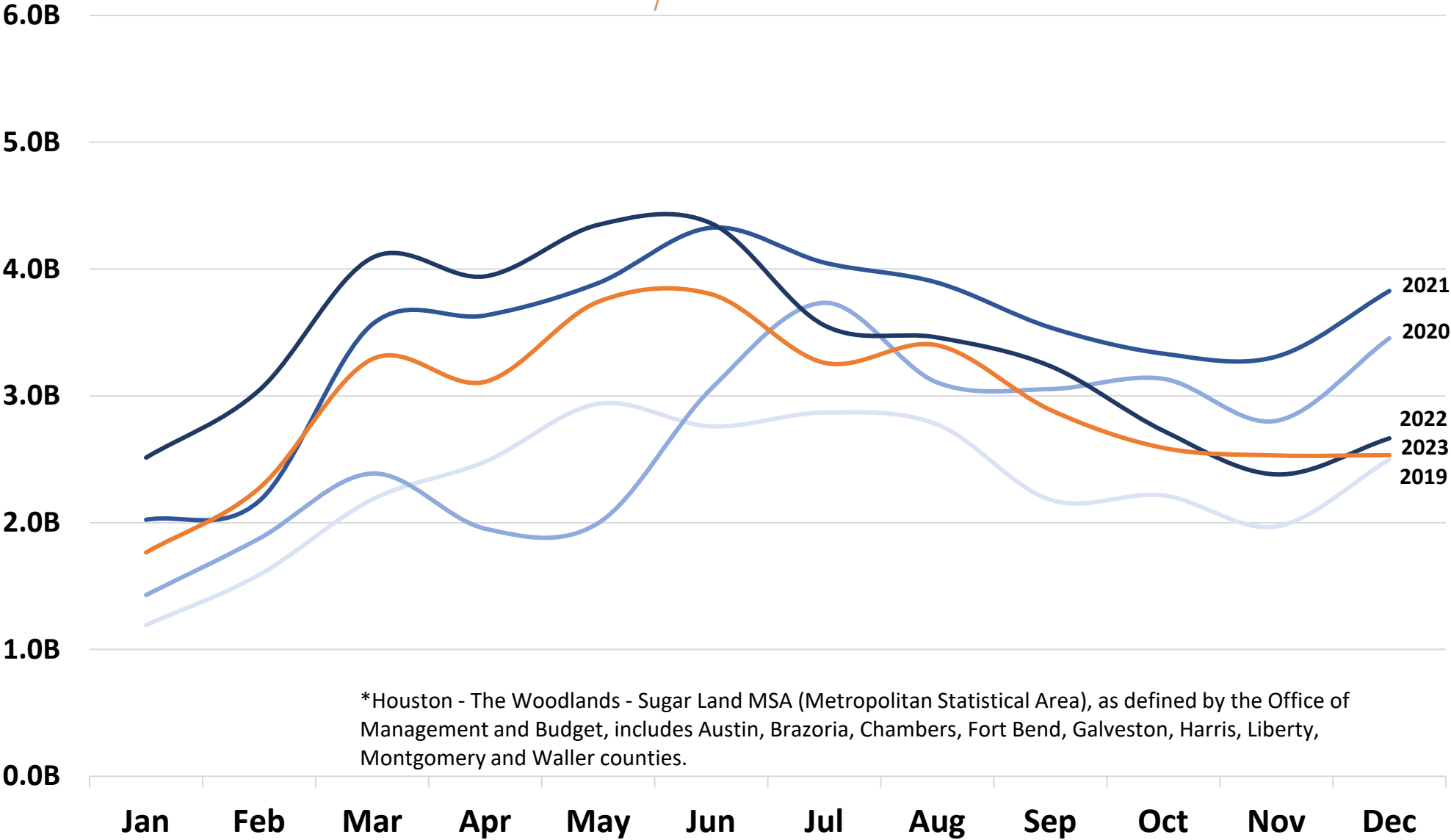
— 2019 — 2020 — 2021 — 2022 — 2023



\*Houston - The Woodlands - Sugar Land MSA (Metropolitan Statistical Area), as defined by the Office of Management and Budget, includes Austin, Brazoria, Chambers, Fort Bend, Galveston, Harris, Liberty, Montgomery and Waller counties.

# Houston MSA Residential Sales Volume - 2019-2023

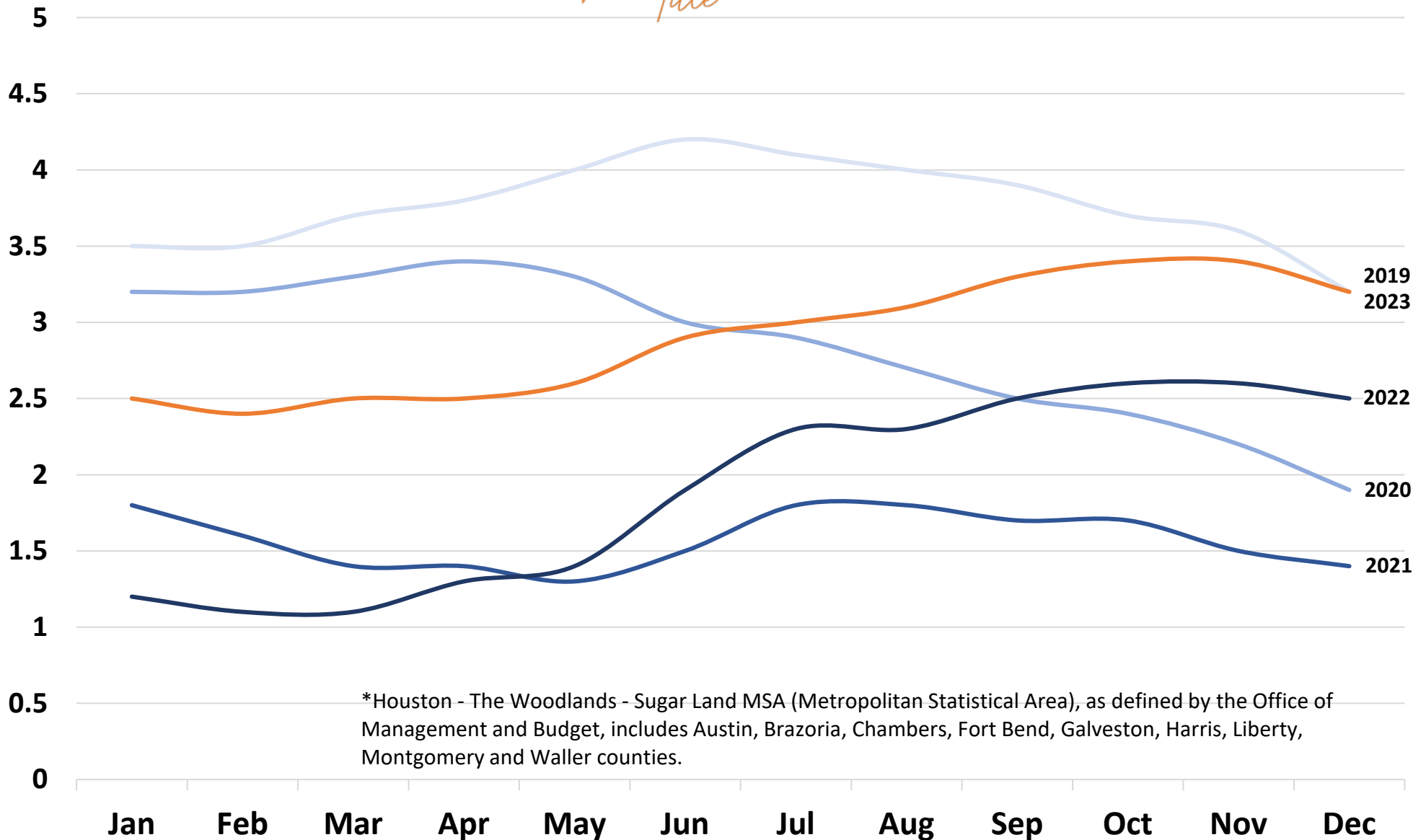
— 2019 — 2020 — 2021 — 2022 — 2023



\*Houston - The Woodlands - Sugar Land MSA (Metropolitan Statistical Area), as defined by the Office of Management and Budget, includes Austin, Brazoria, Chambers, Fort Bend, Galveston, Harris, Liberty, Montgomery and Waller counties.

# Houston MSA Months of Inventory - 2019-2023

— 2019 — 2020 — 2021 — 2022 — 2023



\*Houston - The Woodlands - Sugar Land MSA (Metropolitan Statistical Area), as defined by the Office of Management and Budget, includes Austin, Brazoria, Chambers, Fort Bend, Galveston, Harris, Liberty, Montgomery and Waller counties.