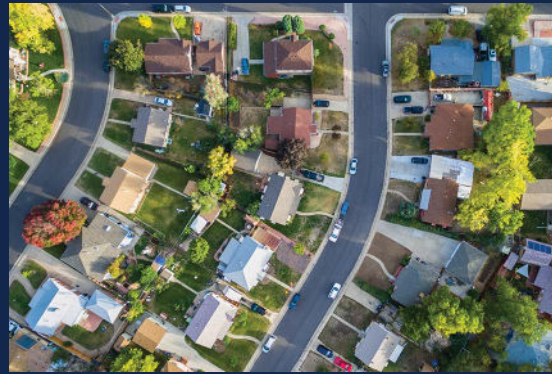


Discover **ANNA** TEXAS



Independence
Title

IndependenceTitle.com



Discover ANNA

ANNATEXAS.GOV

Anna, Texas, is a rapidly growing community in Collin County, situated about 45 miles north of Dallas along U.S. Highway 75 and included within the Dallas-Fort Worth metroplex. With roots dating back to the 1880s, the city began as a small railroad town platted in 1883, developing around the Houston and Texas Central Railway, which helped spark its early growth. Today, Anna is known for its strong sense of hometown identity and remarkable population boom—growing from 16,896 residents in the 2020 Census to over 39,000 by 2026. Positioned near McKinney and Sherman, the city offers a balance of affordability, family-friendly amenities, and expanding residential and commercial development while retaining its small-town charm.

Fast Facts

County: Collin County

Population: Approx. 40K

Median Age: 33

Average Household Income: \$106K

Housing: 78.5% own / 21.5% rent

Average Home Price: \$346K (2026)

The City of Anna

111 N. Powell Pkwy, Anna
972-924-3325

Municipal Court

101 South Powell, Anna
972-924-3325
annatexas.gov

Anna Post Office

715 S Powell Pkwy, Anna
972-924-3350
usps.com

Alarm Permits

annatxpolice.org

Fire Department

305 South Powell Pkwy, Anna
972-924-2143
911 Emergency

Police Department

101 South Powell Pkwy, Anna
972-924-2848
911 Emergency

Voter Registration

collincountytx.gov

Vehicle Registration

collincountytx.gov

Schools

Anna ISD

Located in northern Collin County, 40 miles north of Dallas, Anna is one of the fastest-growing cities in North Texas. As a 5A district, Anna ISD serves more-than 6,000 students, with enrollment growing daily.

151 West Rosamond Parkway, Anna
972-924-1000
annaisd.org

Elementary Schools

Joe K Bryant Elementary

2725 Bryant Farm Rd, Anna
972-924-1300
bryant.annaisd.org

Judith L Harlow Elementary

2412 Leonard Ave, Anna
972-924-1320
harlow.annaisd.org

L Dow Hendricks Elementary

201 N. Ferguson Pkwy, Anna
972-924-1430
hendricks.annaisd.org

Rosamond Sherley Elementary

3000 FM 2862, Anna
972-924-1360
rse.annaisd.org

Sue E Rattan Elementary

1221 S Ferguson Pkwy, Anna
972-924-1400
rattan.annaisd.org

Middle Schools

Clemons Creek Middle School

2700 Leonard Ave, Anna
972-924-1200
ccms.annaisd.org

Slayter Creek Middle School

1201 N Powell Pkwy, Anna
972-924-1200
scms.annaisd.org

High Schools

Anna High School

1107 W Rosamond Pkwy, Anna
972-924-1100
ahs.annaisd.org

Parks & Recreation

Baldwin Park

Baldwin Park, also known as Lakeview Park, provides a picturesque view of the nearby lake and is located within the Lakeview Estates subdivision. This park is also accessible by utilizing the trails from Natural Springs Park.

1235 Lakeview Drive, Anna

Bryant Park

Currently, the park is undeveloped, but in the future will be available for outdoor athletic and recreational activities.

2501 Bryant Farm Road, Anna

Geer Park

Geer Park is a 25-acre tract located just east of the intersection of Sixth and Smith Streets. Like Bryant Park, this park is undeveloped, but in the future will be available for outdoor athletic and recreational activities.

E. 6th Street, Anna

Henry Clay "Yank" Washington Park

Henry Clay "Yank" Washington Park, also known as West Crossing Park, is located within the West Crossing subdivision. Amenities include a playground, trail, and a lighted Half Court Basketball Court.

636 Banbury Drive, Anna

Johnson Park

The park features 2 softball fields where the youth league traditionally plays and a playground.

320 N. Sherley Avenue, Anna

Natural Springs Park

The park has several amenities including walking trails, a man-made pond, fishing pier and a large open area. It is a wonderful park to have a picnic, enjoy a leisurely stroll or other passive activities such as throwing balls, flying kites and pitching frisbees. Paw Park, is an off-leash area for our furry neighbors. The Paw Park includes big and small dog areas, shade structures, and agility equipment

1201 W. White Street, Anna

Sherley Heritage Park

The park is Anna's most historical park celebrating Anna's location along the rail line. The park features a community-built, train-themed playground, newly restored train depot and pavilion. In December, Christmas in the Park, the City's annual Christmas tree lighting ceremony event, is held.

101 S. Sherley Avenue, Anna

Slayter Creek Park

The park includes a variety of recreational amenities including: four lighted ball fields, two tennis courts, two basketball goals, two large multi-purpose athletic fields, a 4,400 foot walking trail, a skateboard park, a playground, horseshoe pits, a shuffleboard court, a splash pad, disc golf course, a large pavilion, gazebo, and a concession building with restrooms.

425 W Rosamond Pkwy, Anna

John Flavel Greer Park

The park is a 19.8-acre community park dedicated in 2025. It features playgrounds, shaded pavilions, a dog park and wooded walking trails.

Woods at Lindsey Place
Rosamond Parkway, Anna

Golf & Tennis

Hurricane Creek Country Club

Collin County's only Private Member-Owned Club
18 Holes | Par 72 | Length 7052 yards | Slope 123
Since 1968, Hurricane Creek has stood as one of the most enjoyable and welcoming golf experiences in North Texas. With its pristine Bentgrass greens, rolling hills, and tranquil lakes, our course has challenged and delighted players of all skill levels for decades. We believe golf is a game for everyone—and we strive to create opportunities for all who love it to connect, grow, and belong. Whether you're a seasoned player, a casual weekend golfer, or a junior just learning the game, there's a place for you here.

1800 Fairway Lane, Anna
972-924-3212
hurricanecreekcc.com

Slayter Creek Disc Golf

Located at Slayter Creek Park. This 18-hole disc golf course is a tournament regulation course.

425 Rosamond Pkwy, Anna

Slayter Creek Sports Courts

Located at Slayter Creek Park. The courts are intended for pickleball, tennis, and basketball use only and operate on a first-come, first-served basis, with no reservations permitted. When pickleball courts are full, players should use the paddle stacking system. Glass containers and pets are not allowed within the court areas, and unauthorized tournaments or classes are prohibited. City-sponsored events have priority over general use. All courts are operated and maintained by the City of Anna.

425 Rosamond Pkwy, Anna



Locally Grown ❖ Texas Strong

Make us your personal
title company!



Locally Grown ❖ Texas Strong

Independence

Title

IndependenceTitle.com