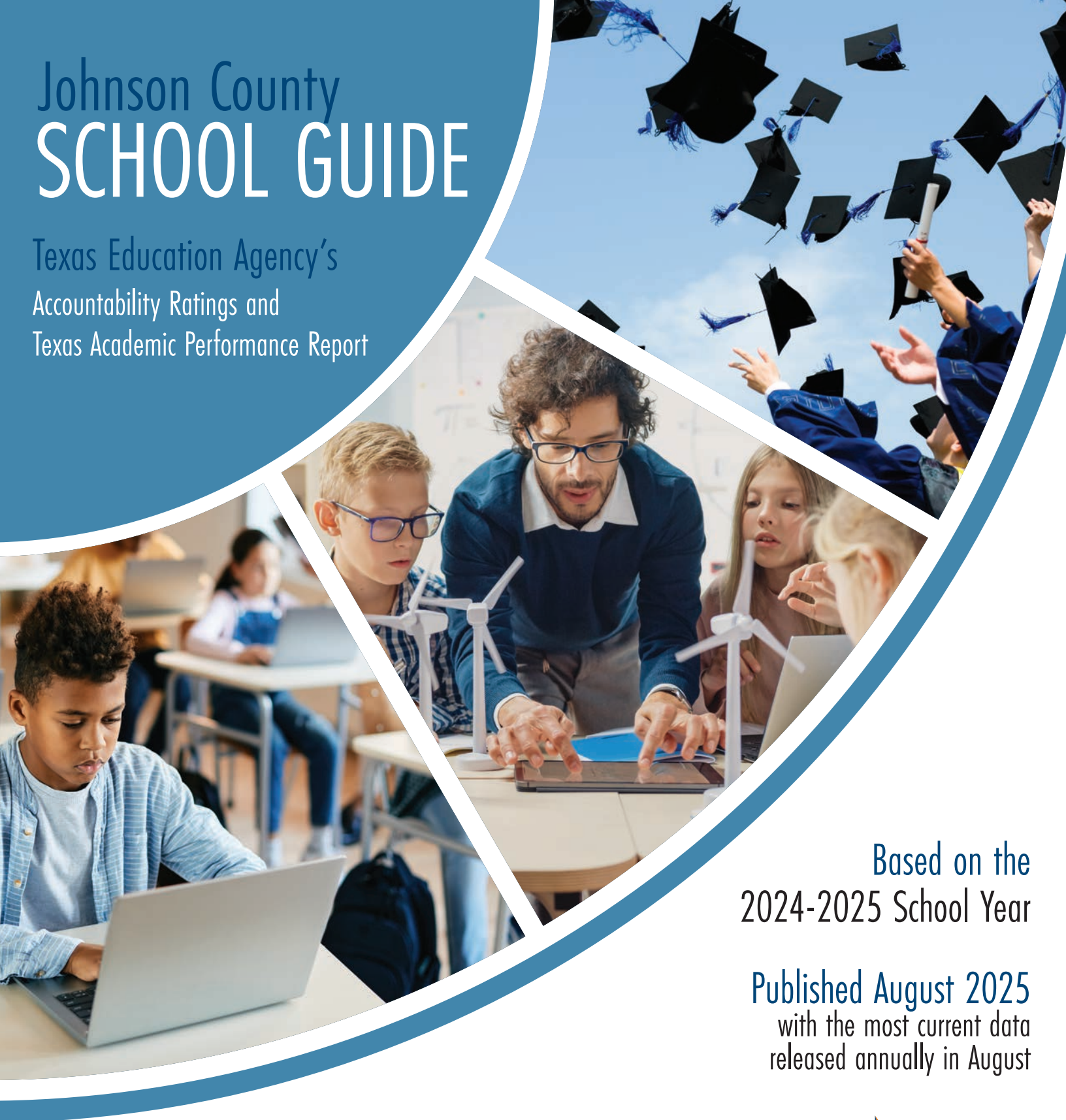


Johnson County SCHOOL GUIDE

Texas Education Agency's
Accountability Ratings and
Texas Academic Performance Report



Based on the
2024-2025 School Year

Published August 2025
with the most current data
released annually in August



IndependenceTitle.com



T.A.P.R.

Texas Academic Performance Reports

The Texas Academic Performance Reports (TAPR) pull together a wide range of information on the performance of students in each school and district in Texas every year. Performance is shown disaggregated by student groups, including ethnicity and low income status. The reports also provide extensive information on school and district staff, programs, and student demographics.

ACCOUNTABILITY RATINGS

The Texas Education Agency Multi-Year District Ratings show the accountability ratings for districts and all schools within the district (based on the new STAAR State of Texas Assessments of Academic Readiness tests as well as other indicators).

The below ratings are based on the 2024-2025 School Year. Updated August 2025

Alvarado ISD

www.alvaradoisd.net

District Overall Rating **C**

Total Students	3,773
Total Staff (Teachers/Admin)	489.8
Students per Teacher	14.5
Attendance Rate	94.1%
Dropout Rate (Grades 9-12)	0.6%
% Tested - SAT/ACT	100%
Average SAT Score	905
Average ACT Score	21.0
STAAR Test Participation (All Grades)	100%
STAAR All Subjects (All Grades)	69.0%
4-Year Graduation Rate without Exclusions	97.7%

Accountability Ratings

Campus	Rating
Alvarado Elementary-North	C
Alvarado Elementary-South	C
Alvarado High School	B
Alvarado Int	C
Alvarado Middle	C
Lillian Elementary	C

Burleson ISD

www.burlesonisd.net

District Overall Rating **B**

Total Students	12,718
Total Staff (Teachers/Admin)	1,660.3
Students per Teacher	15.0
Attendance Rate	93.8%
Dropout Rate (Grades 9-12)	1.5%
% Tested - SAT/ACT	78.6%
Average SAT Score	1080
Average ACT Score	17.5
STAAR Test Participation (All Grades)	99.0%
STAAR All Subjects (All Grades)	79.0%
4-Year Graduation Rate without Exclusions	92.8%

Accountability Ratings

Campus	Rating
Academy At Nola Dunn	B
Ann Brock Elementary At Oak Grove	B
Burleson Centennial High School	B
Burleson Collegiate High School	A
ELA/Reading	Distinction Earned
Progress	Distinction Earned
Closing The Gaps	Distinction Earned
Postsecondary Readiness	Distinction Earned
Burleson High School	B
Crossroads High School	B

Frazier Elementary	B
Closing The Gaps	Distinction Earned
Game Dev Design School At Burleson Isd	A
Science	Distinction Earned
Social Studies	Distinction Earned
Closing The Gaps	Distinction Earned
Postsecondary Readiness	Distinction Earned
Hughes Middle	C
Irene Clinkscale Elementary	B
Jack Taylor Elementary	C
Judy Hajek Elementary	B
Mound Elementary	B
Mathematics	Distinction Earned
Science	Distinction Earned
Closing The Gaps	Distinction Earned
Postsecondary Readiness	Distinction Earned
Nick Kerr Middle	B
Norwood Elementary	D
Richard Bransom Elementary	B
Closing The Gaps	Distinction Earned
Steam Middle	A
Mathematics	Distinction Earned
Science	Distinction Earned
Progress	Distinction Earned
Closing The Gaps	Distinction Earned
Postsecondary Readiness	Distinction Earned
William Stribling Elementary	B

Cleburne ISD

www.cleburne.k12.tx.us

District Overall Rating **C**

Total Students	7,054
Total Staff (Teachers/Admin)	1,099.3
Students per Teacher	12.9
Attendance Rate	92.8%
Dropout Rate (Grades 9-12)	1.6%
% Tested - SAT/ACT	56.1%
Average SAT Score	927
Average ACT Score	17.5
STAAR Test Participation (All Grades)	99.0%
STAAR All Subjects (All Grades)	69.0%
4-Year Graduation Rate without Exclusions	93.4%

Accountability Ratings

Campus	Rating
Ad Wheat Middle	C
Adams Elementary	D
Cleburne High School	C
Mathematics	Distinction Earned
Coleman Elementary	B
Progress	Distinction Earned

Cooke Elementary	B
Progress	Distinction Earned
Gerard Elementary	A
ELA/Reading	Distinction Earned
Progress	Distinction Earned
Closing The Gaps	Distinction Earned
Irving Elementary	B
Progress	Distinction Earned
Lowell Smith Jr Int	C
Marti Elementary	D
Santa Fe Elementary	B
Team School	B

Crowley ISD

www.crowley.k12.tx.us

District Overall Rating **C**

Total Students	16,956
Total Staff (Teachers/Admin)	2,168.4
Students per Teacher	13.4
Attendance Rate	92.1%
Dropout Rate (Grades 9-12)	2.7%
% Tested - SAT/ACT	83.8%
Average SAT Score	857
Average ACT Score	18.3
STAAR Test Participation (All Grades)	99.0%
STAAR All Subjects (All Grades)	66.0%
4-Year Graduation Rate without Exclusions	90.4%

Accountability Ratings

Campus	Rating
Bess Race Elementary	D
Crowley College Prep Elementary	B
Crowley High School	C
Crowley Middle	F
Crowley Montessori Academy	C
ELA/Reading	Distinction Earned
Dallas Park Elementary	B
Closing The Gaps	Distinction Earned
David L Walker Elementary	C
Mathematics	Distinction Earned
Science	Distinction Earned
Deer Creek Elementary	C
H F Stevens Middle	C
J A Hargrave Elementary	D
Jackie Carden Elementary	D
June W Davis Elementary	B
Mary Harris Elementary	D
Meadowcreek Elementary	C
North Crowley High School	C
Social Studies	Distinction Earned
Oakmont Elementary	B
Progress	Distinction Earned
Closing The Gaps	Distinction Earned
Postsecondary Readiness	Distinction Earned

Parkway Elementary	C
Richard Allie Middle	C
S H Crowley Elementary	C
ELA/Reading	Distinction Earned
Postsecondary Readiness	Distinction Earned
Sidney H Poynter	B
Mathematics	Distinction Earned
Closing The Gaps	Distinction Earned
Sue Crouch Elementary	B
ELA/Reading	Distinction Earned
Science	Distinction Earned
Progress	Distinction Earned
Closing The Gaps	Distinction Earned
Summer Creek Middle	D
Sycamore Elementary	D
Tarrant Co J J A E P	Not Rated

Godley ISD

www.godleyisd.net

District Overall Rating C	
Total Students	3,002
Total Staff (Teachers/Admin)	522.6
Students per Teacher	13.0
Attendance Rate	94.5%
Dropout Rate (Grades 9-12)	0.8%
% Tested - SAT/ACT	75.0%
Average SAT Score	919
Average ACT Score	26.2
STAAR Test Participation (All Grades)	99.0%
STAAR All Subjects (All Grades)	76.0%
4-Year Graduation Rate without Exclusions	96.4%

Accountability Ratings

Campus	Rating
Godley High School	B
Godley Middle	C
Legacy Elementary	C
Pleasant View Elementary	C
RB Godley Elementary	C

Granbury ISD

www.granburyisd.org

District Overall Rating B	
Total Students	7,933
Total Staff (Teachers/Admin)	1,121.4
Students per Teacher	14.5
Attendance Rate	94.2%
Dropout Rate (Grades 9-12)	0.7%
% Tested - SAT/ACT	41.6%
Average SAT Score	1050
Average ACT Score	20.6
STAAR Test Participation (All Grades)	99.0%
STAAR All Subjects (All Grades)	78.0%
4-Year Graduation Rate without Exclusions	94.5%

Accountability Ratings

Campus	Rating
Acton Elementary	A
Science	Distinction Earned
Closing The Gaps	Distinction Earned
Acton Middle	B
ELA/Reading	Distinction Earned
Social Studies	Distinction Earned
Progress	Distinction Earned
Postsecondary Readiness	Distinction Earned
Emma Roberson Early Learning Academy	B
Granbury High School	B
ELA/Reading	Distinction Earned
Science	Distinction Earned
Progress	Distinction Earned
Closing The Gaps	Distinction Earned
Granbury Middle	C
John And Lynn Brawner Elementary	C
ELA/Reading	Distinction Earned
Mambrino School	B
Nettie Baccus Elementary	B
Progress	Distinction Earned
Oak Woods School	A
Mathematics	Distinction Earned
Science	Distinction Earned
Progress	Distinction Earned
Closing The Gaps	Distinction Earned
Postsecondary Readiness	Distinction Earned
Stars Accelerated High School	A

Grandview ISD

www.gvisd.org

District Overall Rating B	
Total Students	1,428
Total Staff (Teachers/Admin)	186.8
Students per Teacher	12.7
Attendance Rate	96.1%
Dropout Rate (Grades 9-12)	0.00%
% Tested - SAT/ACT	57.0%
Average SAT Score	996
Average ACT Score	19.7
STAAR Test Participation (All Grades)	100%
STAAR All Subjects (All Grades)	85.0%
4-Year Graduation Rate without Exclusions	100%

Accountability Ratings

Campus	Rating
Grandview Elementary	B
Science	Distinction Earned
Grandview High School	A
ELA/Reading	Distinction Earned
Mathematics	Distinction Earned
Science	Distinction Earned
Social Studies	Distinction Earned
Closing The Gaps	Distinction Earned
Grandview Middle	B

Joshua ISD

www.joshuaisd.org

District Overall Rating B	
Total Students	6,020
Total Staff (Teachers/Admin)	858.9
Students per Teacher	14.3
Attendance Rate	95.0%
Dropout Rate (Grades 9-12)	0.0%
% Tested - SAT/ACT	89.4%
Average SAT Score	950
Average ACT Score	20.8
STAAR Test Participation (All Grades)	100%
STAAR All Subjects (All Grades)	82%
4-Year Graduation Rate without Exclusions	98.7%

Accountability Ratings

Campus	Rating
A G Elder Elementary	A
Mathematics	Distinction Earned
Science	Distinction Earned
Progress	Distinction Earned
Closing The Gaps	Distinction Earned
Postsecondary Readiness	Distinction Earned
Caddo Grove Elementary	C
H D Staples Elementary	B
Mathematics	Distinction Earned
Science	Distinction Earned
Progress	Distinction Earned
Postsecondary Readiness	Distinction Earned
Joshua High School	B
ELA/Reading	Distinction Earned
Science	Distinction Earned
Social Studies	Distinction Earned
Progress	Distinction Earned
Closing The Gaps	Distinction Earned
Postsecondary Readiness	Distinction Earned
Joshua High School Ninth Grade Campus	A
ELA/Reading	Distinction Earned
Mathematics	Distinction Earned
Science	Distinction Earned
Social Studies	Distinction Earned
Progress	Distinction Earned
Closing The Gaps	Distinction Earned
Postsecondary Readiness	Distinction Earned
New Horizon High School	A
North Joshua Elementary	A
Mathematics	Distinction Earned
Progress	Distinction Earned
Closing The Gaps	Distinction Earned
Postsecondary Readiness	Distinction Earned
Plum Creek Elementary	B
Mathematics	Distinction Earned
Science	Distinction Earned

R C Loflin Middle	B
Mathematics	Distinction Earned
Social Studies	Distinction Earned
Progress	Distinction Earned
Closing The Gaps	Distinction Earned
Postsecondary Readiness	Distinction Earned
Tom And Nita Nichols Middle	B
Postsecondary Readiness	Distinction Earned

Keene ISD

www.keeneisd.org

District Overall Rating B	
Total Students	1,097
Total Staff (Teachers/Admin)	171.1
Students per Teacher	11.3
Attendance Rate	94.3%
Dropout Rate (Grades 9-12)	1.0%
% Tested - SAT/ACT	42.9%
Average SAT Score	1037
Average ACT Score	29.4
STAAR Test Participation (All Grades)	100%
STAAR All Subjects (All Grades)	81.0%
4-Year Graduation Rate without Exclusions	97.9%

Accountability Ratings

Campus	Rating
Keene Elementary	C
Keene High School	A
ELA/Reading	Distinction Earned
Progress	Distinction Earned
Closing The Gaps	Distinction Earned
Keene Middle	A
ELA/Reading	Distinction Earned
Social Studies	Distinction Earned
Progress	Distinction Earned
Closing The Gaps	Distinction Earned
Postsecondary Readiness	Distinction Earned
The Summit Leadership Academy	C
Science	Distinction Earned

Mansfield ISD

www.mansfieldisd.org

District Overall Rating B	
Total Students	35,851
Total Staff (Teachers/Admin)	4,787.1
Students per Teacher	14.8
Attendance Rate	94.4%
Dropout Rate (Grades 9-12)	0.9%
% Tested - SAT/ACT	88.9%
Average SAT Score	988
Average ACT Score	21.6
STAAR Test Participation (All Grades)	99.0%
STAAR All Subjects (All Grades)	81.0%
4-Year Graduation Rate without Exclusions	95.0%

Accountability Ratings

Campus	Rating
Alice Ponder Elementary	B
Progress	Distinction Earned
Closing The Gaps	Distinction Earned
Alma Martinez Int	B
Mathematics	Distinction Earned
Anna May Daulton Elementary	B
Annette Perry Elementary	A
ELA/Reading	Distinction Earned
Progress	Distinction Earned
Closing The Gaps	Distinction Earned
Asa E Low Jr Int	B
Mathematics	Distinction Earned
Progress	Distinction Earned
Closing The Gaps	Distinction Earned
Postsecondary Readiness	Distinction Earned
Brenda Norwood Elementary	A
Brooks Wester Middle	A
ELA/Reading	Distinction Earned
Mathematics	Distinction Earned
Science	Distinction Earned
Social Studies	Distinction Earned
Progress	Distinction Earned
Closing The Gaps	Distinction Earned
Postsecondary Readiness	Distinction Earned
Carol Holt Elementary	A
ELA/Reading	Distinction Earned
Mathematics	Distinction Earned
Progress	Distinction Earned
Closing The Gaps	Distinction Earned
Postsecondary Readiness	Distinction Earned
Charlene McKinzey Middle	A
ELA/Reading	Distinction Earned

Charlotte Anderson Preparatory Academy	B
Progress	Distinction Earned
Closing The Gaps	Distinction Earned
Postsecondary Readiness	Distinction Earned
Cora Spencer Elementary	A
ELA/Reading	Distinction Earned
Mathematics	Distinction Earned
Progress	Distinction Earned
Closing The Gaps	Distinction Earned
Postsecondary Readiness	Distinction Earned
Cross Timbers Int	D
D P Morris Elementary	C
Danny Jones Middle	A
Closing The Gaps	Distinction Earned
Della Icenhower Int	B
ELA/Reading	Distinction Earned
Progress	Distinction Earned
Closing The Gaps	Distinction Earned
Donna Shepard Academy	B
Mathematics	Distinction Earned
Closing The Gaps	Distinction Earned
Postsecondary Readiness	Distinction Earned
Dr Sarah Jandrucko Acad For Early Learners	B
Elizabeth Smith Academy	B
Erma Nash Elementary	C
Glenn Harmon Elementary	D
Imogene Gideon Elementary	C
J L Boren Elementary	A
Postsecondary Readiness	Distinction Earned
James Coble Middle	B
Social Studies	Distinction Earned
Closing The Gaps	Distinction Earned
Postsecondary Readiness	Distinction Earned
Janet Brockett Elementary	C
Judy Miller Elementary	C
Kenneth Davis Elementary	A
ELA/Reading	Distinction Earned
Progress	Distinction Earned
Closing The Gaps	Distinction Earned
Linda Jobe Middle	B
Mathematics	Distinction Earned
Progress	Distinction Earned
Closing The Gaps	Distinction Earned
Louise Cabaniss Academy	B
ELA/Reading	Distinction Earned
Progress	Distinction Earned
Postsecondary Readiness	Distinction Earned
Mansfield Frontier Stem Academy	A
ELA/Reading	Distinction Earned
Mathematics	Distinction Earned
Science	Distinction Earned
Social Studies	Distinction Earned
Closing The Gaps	Distinction Earned
Postsecondary Readiness	Distinction Earned

Mansfield High School	A
ELA/Reading	Distinction Earned
Mathematics	Distinction Earned
Social Studies	Distinction Earned
Closing The Gaps	Distinction Earned
Postsecondary Readiness	Distinction Earned
Mansfield Lake Ridge High School	A
Social Studies	Distinction Earned
Progress	Distinction Earned
Closing The Gaps	Distinction Earned
Mansfield Legacy High School	B
Social Studies	Distinction Earned
Closing The Gaps	Distinction Earned
Postsecondary Readiness	Distinction Earned
Mansfield Summit High School	A
Mathematics	Distinction Earned
Science	Distinction Earned
Closing The Gaps	Distinction Earned
Postsecondary Readiness	Distinction Earned
Mansfield Timberview High School	A
Mathematics	Distinction Earned
Progress	Distinction Earned
Closing The Gaps	Distinction Earned
Postsecondary Readiness	Distinction Earned
Martha Reid Academy	B
Mary Jo Sheppard Elementary	B
ELA/Reading	Distinction Earned
Closing The Gaps	Distinction Earned
Mary Lillard I S	A
Mary Orr Int	B
Closing The Gaps	Distinction Earned
Nancy Neal Elementary	A
Closing The Gaps	Distinction Earned
Postsecondary Readiness	Distinction Earned
Roberta Tipps Academy	A
ELA/Reading	Distinction Earned
Mathematics	Distinction Earned
Progress	Distinction Earned
Closing The Gaps	Distinction Earned
Postsecondary Readiness	Distinction Earned
Rogene Worley Middle	B
T A Howard Middle	C
Progress	Distinction Earned
Tarver-Rendon Ag Leadership	C
Tccse Early College HS At Timberview	A
ELA/Reading	Distinction Earned
Mathematics	Distinction Earned
Science	Distinction Earned
Social Studies	Distinction Earned
Closing The Gaps	Distinction Earned
Postsecondary Readiness	Distinction Earned
The Phoenix Academy	A
Thelma Jones Elementary	B
Closing The Gaps	Distinction Earned
Willie Brown Academy	A

Rio Vista ISD

www.rvisd.net

District Overall Rating **C**

Total Students	967
Total Staff (Teachers/Admin)	141.3
Students per Teacher	13.8
Attendance Rate	95.2%
Dropout Rate (Grades 9-12)	0.4%
% Tested - SAT/ACT	71.2%
Average SAT Score	958
Average ACT Score	17.0
STAAR Test Participation (All Grades)	100%
STAAR All Subjects (All Grades)	76.0%
4-Year Graduation Rate without Exclusions	96.7%

Accountability Ratings

Campus

Rio Vista Elementary	Rating C
Rio Vista High School	C
Mathematics	Distinction Earned
Social Studies	Distinction Earned
Progress	Distinction Earned
Rio Vista Middle	B
Science	Distinction Earned
Social Studies	Distinction Earned

Venus ISD

www.venusisd.net

District Overall Rating **D**

Total Students	2,308
Total Staff (Teachers/Admin)	331.0
Students per Teacher	13.8
Attendance Rate	94.8%
Dropout Rate (Grades 9-12)	1.4%
% Tested - SAT/ACT	28.1%
Average SAT Score	966
Average ACT Score	Data N/A
STAAR Test Participation (All Grades)	100%
STAAR All Subjects (All Grades)	64.0%
4-Year Graduation Rate without Exclusions	94.0%

Accountability Ratings

Campus

Venus Elementary	Rating D
Venus High School	B
Venus Middle	D
Venus Pri	D

The TEA updates the **Ratings** in August/September of each year

and the

T.A.P.R. in January of each year.

Learn more about your School or District



Visit



Here is what you can find:

- Accountability Overview
 - Overall Rating
 - Change Over Time
 - Overall Performance Details
- Finance/Per Student Averages
- Student Enrollment
- Attendance Rates
- Staff Information
- Distinction Designations
- Academic Programs
- Advanced Placement (AP) Course(s)
- UIL Activities