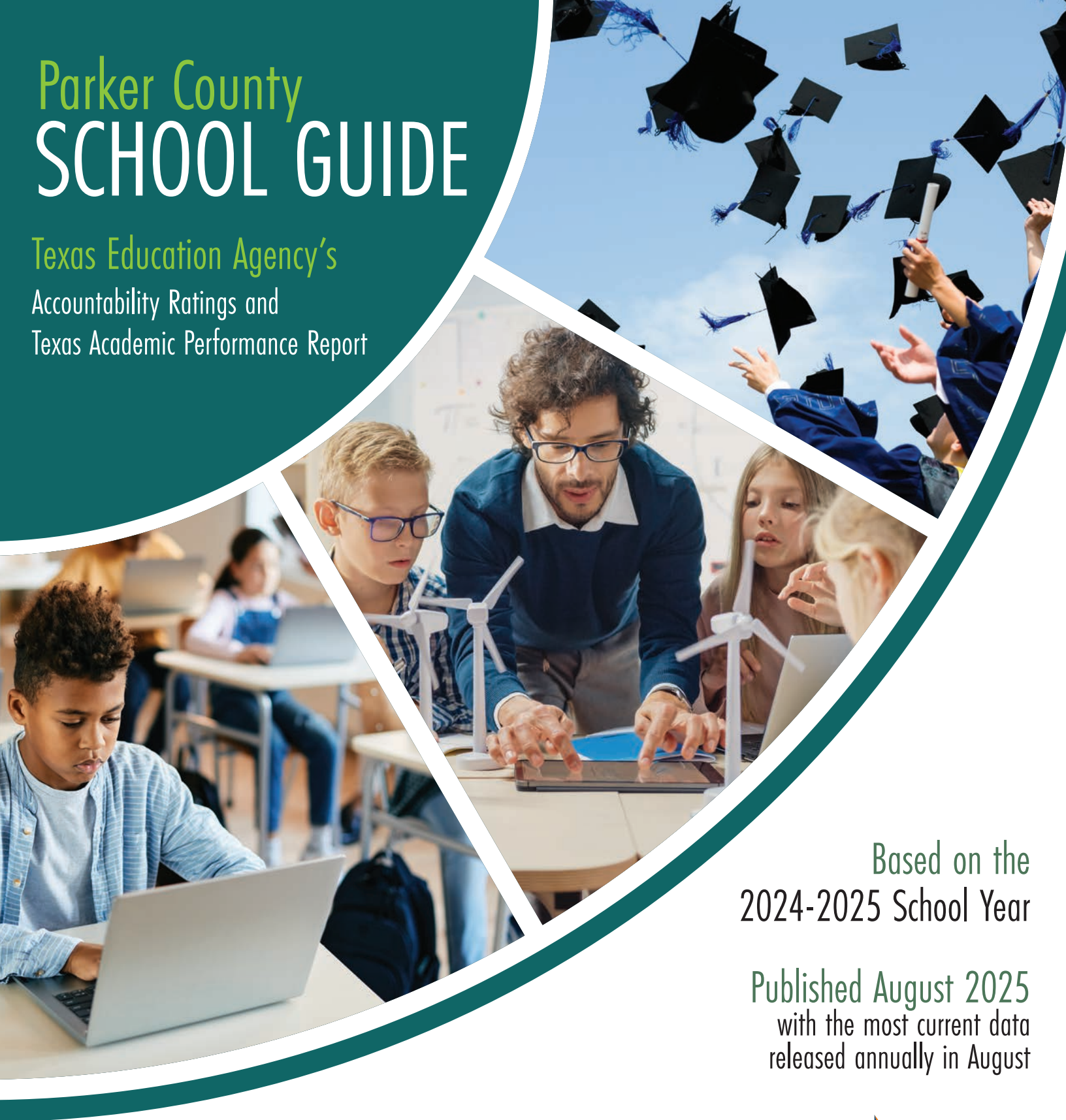


Parker County SCHOOL GUIDE

Texas Education Agency's
Accountability Ratings and
Texas Academic Performance Report



Based on the
2024-2025 School Year

Published August 2025
with the most current data
released annually in August



IndependenceTitle.com



T.A.P.R.

Texas Academic Performance Reports

The Texas Academic Performance Reports (TAPR) pull together a wide range of information on the performance of students in each school and district in Texas every year. Performance is shown disaggregated by student groups, including ethnicity and low income status. The reports also provide extensive information on school and district staff, programs, and student demographics.

ACCOUNTABILITY RATINGS

The Texas Education Agency Multi-Year District Ratings show the accountability ratings for districts and all schools within the district (based on the new STAAR State of Texas Assessments of Academic Readiness tests as well as other indicators).

The below ratings are based on the 2024-2025 School Year. Updated August 2025

Aledo ISD

aledo.schoolfusion.us

District Overall Rating A	
Total Students	8,161
Total Staff (Teachers/Admin)	922.6
Students per Teacher	15.7
Attendance Rate	95.3%
Dropout Rate (Grades 9-12)	0.3%
% Tested - SAT/ACT	97.4%
Average SAT Score	1084
Average ACT Score	23.6
STAAR Test Participation (All Grades)	99%
STAAR All Subjects (All Grades)	90%
4-Year Graduation Rate without Exclusions	98%

Accountability Ratings

Campus	Rating
Aledo High School	A
Closing The Gaps	Distinction Earned
Aledo Middle	B
Annetta Elementary	B
Science	Distinction Earned
Coder Elementary	A
ELA/Reading	Distinction Earned
Science	Distinction Earned
Progress	Distinction Earned
Closing The Gaps	Distinction Earned
Postsecondary Readiness	Distinction Earned
Don R Daniel Ninth Grade Campus	A
Social Studies	Distinction Earned
Early Childhood Academy	A
Lynn McKinney Elementary	A
Science	Distinction Earned
Mcanally Middle	A
Closing The Gaps	Distinction Earned
McCall Elementary	A
Science	Distinction Earned
Progress	Distinction Earned
Closing The Gaps	Distinction Earned
Postsecondary Readiness	Distinction Earned
Stuard Elementary	A
Science	Distinction Earned
Progress	Distinction Earned
Closing The Gaps	Distinction Earned
Vandagriff Elementary	A
Mathematics	Distinction Earned
Science	Distinction Earned
Postsecondary Readiness	Distinction Earned
Walsh Elementary	A
ELA/Reading	Distinction Earned
Closing The Gaps	Distinction Earned
Postsecondary Readiness	Distinction Earned

Brock ISD

www.brockisd.net

District Overall Rating A	
Total Students	2,177
Total Staff (Teachers/Admin)	271.2
Students per Teacher	13.4
Attendance Rate	95.5%
Dropout Rate (Grades 9-12)	0%
% Tested - SAT/ACT	88.2%
Average SAT Score	1034
Average ACT Score	22.1
STAAR Test Participation (All Grades)	100%
STAAR All Subjects (All Grades)	90%
4-Year Graduation Rate without Exclusions	98.3%

Accountability Ratings

Campus	Rating
Brock Elementary	B
Brock High School	A
Brock Int	B
Brock Middle	B

Garner ISD

www.garnerisd.net

District Overall Rating C	
Total Students	365
Total Staff (Teachers/Admin)	68.9
Students per Teacher	10.5
Attendance Rate	95.4%
Dropout Rate (Grades 9-12)	0%
% Tested - SAT/ACT	--
Average SAT Score	--
Average ACT Score	--
STAAR Test Participation (All Grades)	100%
STAAR All Subjects (All Grades)	70%
4-Year Graduation Rate without Exclusions	90.3%

Accountability Ratings

Campus	Rating
Garner College And Career Preparatory Academy	C

Millsap ISD

www.millsapisd.net

District Overall Rating B	
Total Students	1,100
Total Staff (Teachers/Admin)	169.6
Students per Teacher	13.4
Attendance Rate	95.5%
Dropout Rate (Grades 9-12)	0.3%
% Tested - SAT/ACT	39.7%
Average SAT Score	1036
Average ACT Score	--
STAAR Test Participation (All Grades)	100%
STAAR All Subjects (All Grades)	79%
4-Year Graduation Rate without Exclusions	100%

Accountability Ratings

Campus	Rating
Millsap Elementary	C
Millsap High School	A
Closing The Gaps	Distinction Earned
Millsap Middle	C

Peaster ISD

www.peaster.net

District Overall Rating B	
Total Students	1,706
Total Staff (Teachers/Admin)	227.8
Students per Teacher	13.6
Attendance Rate	94.9%
Dropout Rate (Grades 9-12)	0%
% Tested - SAT/ACT	95%
Average SAT Score	1071
Average ACT Score	19.2
STAAR Test Participation (All Grades)	99%
STAAR All Subjects (All Grades)	79%
4-Year Graduation Rate without Exclusions	100%

Accountability Ratings

Campus	Rating
Peaster Elementary	B
Peaster High School	A
Progress	Distinction Earned
Peaster Int	B
Peaster Middle	B

Poolville ISD

www.poolville.net

District Overall Rating **D**

Total Students	748
Total Staff (Teachers/Admin)	118.4
Students per Teacher	11.5
Attendance Rate	94.3%
Dropout Rate (Grades 9-12)	0.5%
% Tested - SAT/ACT	10%
Average SAT Score	--
Average ACT Score	--
STAAR Test Participation (All Grades)	99%
STAAR All Subjects (All Grades)	75%
4-Year Graduation Rate without Exclusions	97.5%

Accountability Ratings

Campus	Rating
Poolville Elementary	C
Poolville High School	D
Poolville Middle	D

Springtown ISD

www.springtownisd.net

District Overall Rating **C**

Total Students	4,171
Total Staff (Teachers/Admin)	587.3
Students per Teacher	13.7
Attendance Rate	94.3%
Dropout Rate (Grades 9-12)	2.2%
% Tested - SAT/ACT	46.1%
Average SAT Score	1007
Average ACT Score	19.9
STAAR Test Participation (All Grades)	99%
STAAR All Subjects (All Grades)	71%
4-Year Graduation Rate without Exclusions	91.5%

Accountability Ratings

Campus	Rating
Goshen Creek Elementary	C
Porcupine Academy	A
Springtown Elementary	C
Springtown High School	B
Springtown Int	C
Springtown Middle	C
Springtown Reno Elementary	B

Weatherford ISD

www.weatherfordisd.com

District Overall Rating **C**

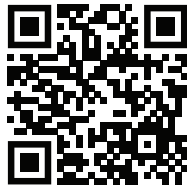
Total Students	8,203
Total Staff (Teachers/Admin)	1,154.7
Students per Teacher	14
Attendance Rate	93.9%
Dropout Rate (Grades 9-12)	0.6%
% Tested - SAT/ACT	91.1%
Average SAT Score	940
Average ACT Score	20.1
STAAR Test Participation (All Grades)	99%
STAAR All Subjects (All Grades)	75%
4-Year Graduation Rate without Exclusions	95.1%

Accountability Ratings

Campus	Rating
Austin Elementary	B
Crockett Elementary	D
Curtis Elementary	B
Progress	Distinction Earned
Hall Middle	C
Social Studies	Distinction Earned
Ikard Elementary	D
Martin Elementary	B
New Jjaep	Not Rated
Rise Academy	C
Seguin Elementary	C
Tison Middle	D
Weatherford High School	B
Wright Elementary	C



Learn more about your **School** or **District**



Visit



Here is what you can find:

- Accountability Overview
 - Overall Rating
 - Change Over Time
 - Overall Performance Details
- Finance/Per Student Averages
- Student Enrollment
- Attendance Rates
- Staff Information
- Distinction Designations
- Academic Programs
- Advanced Placement (AP) Course(s)
- UIL Activities

Learning for Life

Connect with the very best real estate resources
plus title and escrow professionals at

IndependenceTitle.com



Locally Grown ❖ Texas Strong